

ECHS1 antibody [N1C2]

Cat. No. GTX114376

Host	Rabbit
Clonality	Polyclonal
Isotype	IgG
Application	WB, ICC/IF, IHC-P, IP
Reactivity	Human, Mouse

Reference (1)
Package
100 µl, 25 µl

APPLICATION

Application Note

*Optimal dilutions/concentrations should be determined by the researcher.

Suggested dilution	Recommended dilution
WB	1:500-1:10000
ICC/IF	1:100-1:1000
IHC-P	1:100-1:1000
IP	1:100-1:500

Not tested in other applications.

Calculated MW 31 kDa. ([Note](#))

PROPERTIES

Form	Liquid
Buffer	0.1M Tris, 0.1M Glycine, 20% Glycerol
Preservative	0.01% Thimerosal
Storage	Store as concentrated solution. Centrifuge briefly prior to opening vial. For short-term storage (1-2 weeks), store at 4°C. For long-term storage, aliquot and store at -20°C or below. Avoid multiple freeze-thaw cycles.
Concentration	1.01 mg/ml (Please refer to the vial label for the specific concentration.)
Immunogen	Recombinant protein encompassing a sequence within the center region of human ECHS1. The exact sequence is proprietary.
Purification	Purified by antigen-affinity chromatography.
Conjugation	Unconjugated



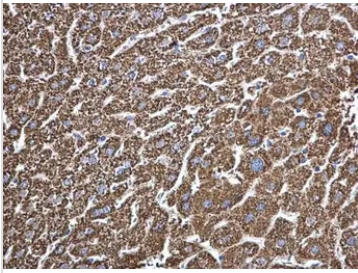
For full product information, images and publications, please visit our [website](#).

For laboratory research use only. Not for any clinical, therapeutic, or diagnostic use in humans or animals. Not for animal or human consumption.

Note

Purchasers shall not, and agree not to enable third parties to, analyze, copy, reverse engineer or otherwise attempt to determine the structure or sequence of the product.

DATA IMAGES



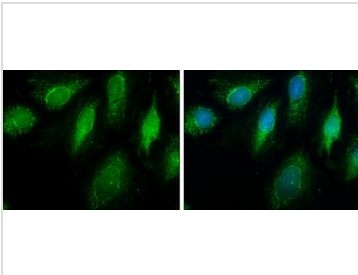
GTX114376 IHC-P Image

ECHS1 antibody [N1C2] detects ECHS1 protein at mitochondria on mouse heart by immunohistochemical analysis.

Sample: Paraffin-embedded mouse heart.

ECHS1 antibody [N1C2] (GTX114376) dilution: 1:500.

Antigen Retrieval: Trility™ (EDTA based, pH 8.0) buffer, 15min



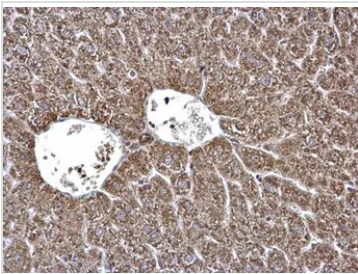
GTX114376 ICC/IF Image

ECHS1 antibody [N1C2] detects ECHS1 protein at mitochondria by immunofluorescent analysis.

Sample: HeLa cells were fixed in ice-cold MeOH for 5 min.

Green: ECHS1 protein stained by ECHS1 antibody [N1C2] (GTX114376) diluted at 1:500.

Blue: Hoechst 33342 staining.



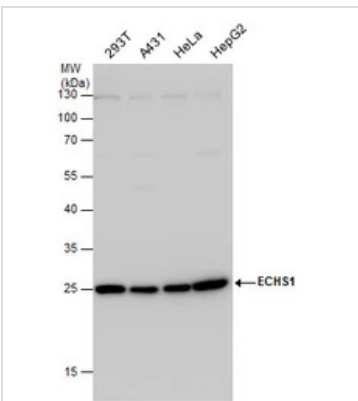
GTX114376 IHC-P Image

ECHS1 antibody [N1C2] detects ECHS1 protein at mitochondria on mouse ovary by immunohistochemical analysis.

Sample: Paraffin-embedded mouse liver.

ECHS1 antibody [N1C2] (GTX114376) dilution: 1:500.

Antigen Retrieval: Trility™ (EDTA based, pH 8.0) buffer, 15min



GTX114376 WB Image

ECHS1 antibody detects ECHS1 protein by western blot analysis. Various whole cell extracts (30 µg) were separated by 12% SDS-PAGE, and the membrane was blotted with ECHS1 antibody (GTX114376) diluted by 1:5000.



For full product information, images and publications, please visit our [website](https://www.genetex.com).