

## FAH antibody

Cat. No. GTX114400

Host	Rabbit
Clonality	Polyclonal
Isotype	IgG
Applications	WB, ICC/IF, IHC-P, IHC-Fr
Reactivity	Human, Mouse, Rat

References ( 1 )

Package

100 µl, 25 µl

## Applications

## Application Note

\*Optimal dilutions/concentrations should be determined by the researcher.

Suggested dilution	Recommended dilution
WB	1:500-1:3000
ICC/IF	1:100-1:1000
IHC-P	Assay dependent
IHC-Fr	Assay dependent

Not tested in other applications.

Calculated MW 46 kDa. ( [Note](#) )

## Properties

Form	Liquid
Buffer	PBS, 1% BSA, 20% Glycerol
Preservative	0.025% ProClin 300
Storage	Store as concentrated solution. Centrifuge briefly prior to opening vial. For short-term storage (1-2 weeks), store at 4°C. For long-term storage, aliquot and store at -20°C or below. Avoid multiple freeze-thaw cycles.
Concentration	0.38 mg/ml (Please refer to the vial label for the specific concentration.)
Immunogen	Recombinant protein encompassing a sequence within the center region of human Fumarylacetoacetate hydrolase. The exact sequence is proprietary.
Purification	Purified by antigen-affinity chromatography.
Conjugation	Unconjugated



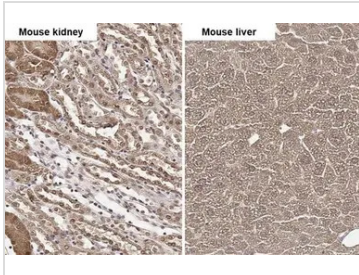
For full product information, images and publications, please visit our [website](#).

For laboratory research use only. Not for any clinical, therapeutic, or diagnostic use in humans or animals. Not for animal or human consumption.

## Note

Purchasers shall not, and agree not to enable third parties to, analyze, copy, reverse engineer or otherwise attempt to determine the structure or sequence of the product.

## DATA IMAGES



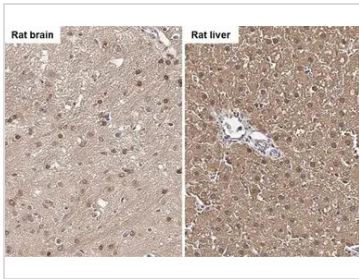
### GTX114400 IHC-P Image

FAH antibody detects FAH protein by immunohistochemical analysis.

Sample: Paraffin-embedded mouse tissues.

FAH stained by FAH antibody (GTX114400) diluted at 1:500.

Antigen Retrieval: Citrate buffer, pH 6.0, 15 min



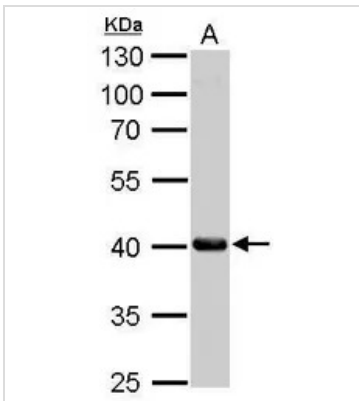
### GTX114400 IHC-P Image

FAH antibody detects FAH protein by immunohistochemical analysis.

Sample: Paraffin-embedded rat tissues.

FAH stained by FAH antibody (GTX114400) diluted at 1:500.

Antigen Retrieval: Citrate buffer, pH 6.0, 15 min



### GTX114400 WB Image

Fumarylacetoacetate hydrolase antibody detects FAH protein by Western blot analysis.

A. 50 µg mouse liver lysate/extract

10 % SDS-PAGE

Fumarylacetoacetate hydrolase antibody (GTX114400) dilution: 1:1000



For full product information, images and publications, please visit our [website](https://www.genetex.com).