

Flotillin 2 antibody [N1C1]

Cat. No. GTX114411

Host	Rabbit
Clonality	Polyclonal
Isotype	IgG
Applications	WB, IHC-P, IP
Reactivity	Human, Mouse

References (2)





 Review (1)

Package

100 µl, 25 µl

Applications

Application Note

*Optimal dilutions/concentrations should be determined by the researcher.

Suggested dilution	Recommended dilution
WB	1:500-1:3000
IHC-P	1:100-1:1000
IP	1:100-1:500

Not tested in other applications.

Calculated MW 47 kDa. ([Note](#))

Properties

Form	Liquid
Buffer	0.1M Tris, 0.1M Glycine, 20% Glycerol
Preservative	0.01% Thimerosal
Storage	Store as concentrated solution. Centrifuge briefly prior to opening vial. For short-term storage (1-2 weeks), store at 4°C. For long-term storage, aliquot and store at -20°C or below. Avoid multiple freeze-thaw cycles.
Concentration	0.49 mg/ml (Please refer to the vial label for the specific concentration.)
Immunogen	Recombinant protein encompassing a sequence within the center region of human Flotillin 2. The exact sequence is proprietary.
Purification	Purified by antigen-affinity chromatography.
Conjugation	Unconjugated

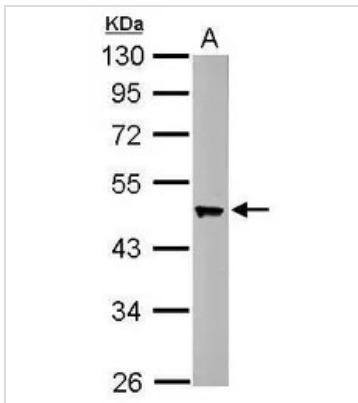
Note

For laboratory research use only. Not for any clinical, therapeutic, or diagnostic use in humans or animals. Not for animal or human consumption.

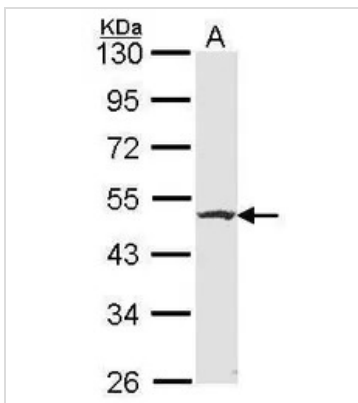
Purchasers shall not, and agree not to enable third parties to, analyze, copy, reverse engineer or otherwise attempt to determine the structure or sequence of the product.



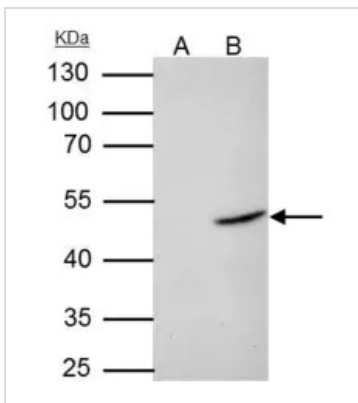
For full product information, images and publications, please visit our [website](#).

DATA IMAGES

GTx114411 WB Image

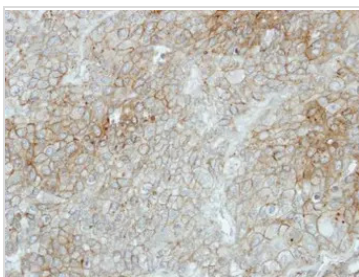
Sample (50 ug of whole cell lysate)
A: mouse brain
10% SDS PAGE
GTx114411 diluted at 1:1000


GTx114411 WB Image

Sample (30 ug of whole cell lysate)
A: HCT116
10% SDS PAGE
Flotillin-2 antibody
GTx114411 diluted at 1:1000


GTx114411 IP Image

Flotillin 2 antibody [N1C1] immunoprecipitates Flotillin 2 protein in IP experiments.
IP samples: HCT-116 whole cell extract
A. Control with 4 µg of preimmune Rabbit IgG
B. Immunoprecipitation of Flotillin 2 protein by 4 µg Flotillin 2 antibody [N1C1] (GTx114411)
10 % SDS-PAGE
The immunoprecipitated Flotillin 2 protein was detected by Flotillin 2 antibody [N1C1] (GTx114411) diluted at 1:1000.
[EasyBlot anti-rabbit IgG (GTx221666-01) was used as a secondary reagent]


GTx114411 IHC-P Image

Immunohistochemical analysis of paraffin-embedded BT474 xenograft, using Flotillin 2(GTx114411) antibody at 1:100 dilution.
Antigen Retrieval: Trilogy™ (EDTA based, pH 8.0) buffer, 15min



For full product information, images and publications, please visit our [website](https://www.genetex.com).