

GATM antibody [N3C3]

Cat. No. GTX114423

Host	Rabbit
Clonality	Polyclonal
Isotype	IgG
Applications	WB
Reactivity	Human, Mouse, Zebrafish

 Review (1)Package
100 µl, 25 µl

Applications

Application Note

*Optimal dilutions/concentrations should be determined by the researcher.

Suggested dilution	Recommended dilution
WB	1:500-1:3000

Not tested in other applications.

Calculated MW 48 kDa. ([Note](#))

Properties

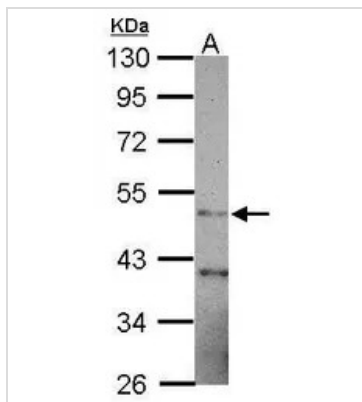
Form	Liquid
Buffer	0.1M Tris, 0.1M Glycine, 20% Glycerol
Preservative	0.01% Thimerosal
Storage	Store as concentrated solution. Centrifuge briefly prior to opening vial. For short-term storage (1-2 weeks), store at 4°C. For long-term storage, aliquot and store at -20°C or below. Avoid multiple freeze-thaw cycles.
Concentration	1 mg/ml (Please refer to the vial label for the specific concentration.)
Immunogen	Recombinant protein encompassing a sequence within the center region of human GATM. The exact sequence is proprietary.
Purification	Purified by antigen-affinity chromatography.
Conjugation	Unconjugated

Note

For laboratory research use only. Not for any clinical, therapeutic, or diagnostic use in humans or animals. Not for animal or human consumption.

Purchasers shall not, and agree not to enable third parties to, analyze, copy, reverse engineer or otherwise attempt to determine the structure or sequence of the product.

For full product information, images and publications, please visit our [website](#).

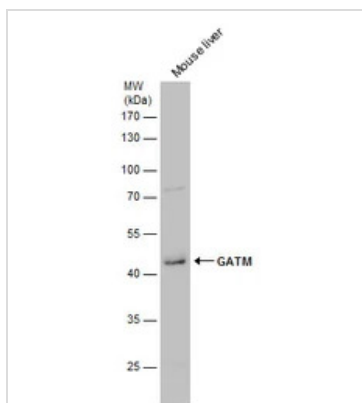
DATA IMAGES

GTX114423 WB Image

Sample (30 µg of whole cell lysate)

A: zebrafish eye

10% SDS PAGE

GTX114423 diluted at 1:1000


GTX114423 WB Image

Mouse tissue extract (50 µg) was separated by 10% SDS-PAGE, and the membrane was blotted with GATM antibody [N3C3] (GTX114423) diluted at 1:500.



For full product information, images and publications, please visit our [website](https://www.genetex.com).