

GNAT2 antibody [N3C3]

Cat. No. GTX114440

Host	Rabbit
Clonality	Polyclonal
Isotype	IgG
Applications	IHC-Fr
Reactivity	Mouse

References (1)

Package

100 µl, 25 µl

Applications

Application Note

*Optimal dilutions/concentrations should be determined by the researcher.

Suggested dilution	Recommended dilution
IHC-Fr	1:100-1:1000

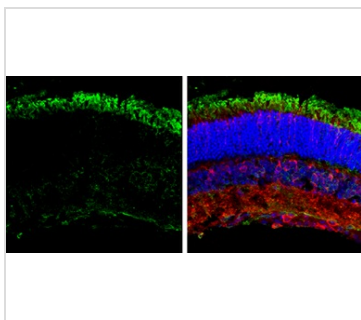
Not tested in other applications.

Properties

Form	Liquid
Buffer	PBS, 20% Glycerol
Preservative	0.025% ProClin 300
Storage	Store as concentrated solution. Centrifuge briefly prior to opening vial. For short-term storage (1-2 weeks), store at 4°C. For long-term storage, aliquot and store at -20°C or below. Avoid multiple freeze-thaw cycles.
Concentration	1.26 mg/ml (Please refer to the vial label for the specific concentration.)
Immunogen	Recombinant protein encompassing a sequence within the center region of human GNAT2. The exact sequence is proprietary.
Purification	Purified by antigen-affinity chromatography.
Conjugation	Unconjugated
Note	<p>For laboratory research use only. Not for any clinical, therapeutic, or diagnostic use in humans or animals. Not for animal or human consumption.</p> <p>Purchasers shall not, and agree not to enable third parties to, analyze, copy, reverse engineer or otherwise attempt to determine the structure or sequence of the product.</p>



For full product information, images and publications, please visit our [website](#).

DATA IMAGES

GTX114440 IHC-Fr Image

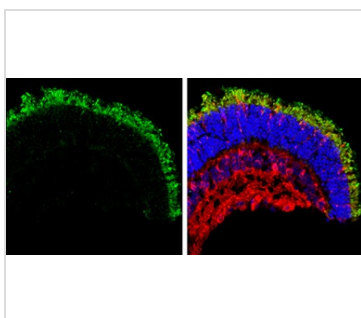
GNAT2 antibody [N3C3] detects GNAT2 protein expression by immunohistochemical analysis.

Sample: Frozen sectioned adult mouse retina.

Green: GNAT2 protein stained by GNAT2 antibody [N3C3] (GTX114440) diluted at 1:250.

Red: beta Tubulin 3/ TUJ1, stained by beta Tubulin 3/ TUJ1 antibody [GT11710] (GTX631836) diluted at 1:250.

Blue: Fluoroshield with DAPI (GTX30920).


GTX114440 IHC-Fr Image

GNAT2 antibody [N3C3] detects GNAT2 protein expression by immunohistochemical analysis.

Sample: Frozen sectioned adult mouse retina.

Green: GNAT2 protein stained by GNAT2 antibody [N3C3] (GTX114440) diluted at 1:250.

Red: beta Tubulin 3/ TUJ1, stained by beta Tubulin 3/ TUJ1 antibody [GT11710] (GTX631836) diluted at 1:250.

Blue: Fluoroshield with DAPI (GTX30920).



For full product information, images and publications, please visit our [website](#).