

## GNB1 antibody

**Cat. No. GTX114442**

<b>Host</b>	Rabbit
<b>Clonality</b>	Polyclonal
<b>Isotype</b>	IgG
<b>Applications</b>	WB, ICC/IF, IHC-P, IHC-Fr, IHC-Wm, IP, PLA
<b>Reactivity</b>	Human, Mouse, Rat, Zebrafish

References ( 8 )

Package

100 µl, 25 µl

## Applications

**Application Note**

\*Optimal dilutions/concentrations should be determined by the researcher.

Suggested dilution	Recommended dilution
WB	1:1000-1:10000
ICC/IF	1:100-1:1000
IHC-P	1:100-1:1000
IHC-Fr	Assay dependent
IHC-Wm	Assay dependent
IP	1:100-1:500
PLA	Assay dependent

Not tested in other applications.

**Calculated MW** 37 kDa. ( [Note](#) )**Product Note** KO/KD validation is based on published data (<https://doi.org/10.1101/697235>).

## Properties

<b>Form</b>	Liquid
<b>Buffer</b>	PBS, 20% Glycerol
<b>Preservative</b>	0.025% ProClin 300
<b>Storage</b>	Store as concentrated solution. Centrifuge briefly prior to opening vial. For short-term storage (1-2 weeks), store at 4°C. For long-term storage, aliquot and store at -20°C or below. Avoid multiple freeze-thaw cycles.
<b>Concentration</b>	1.32 mg/ml (Please refer to the vial label for the specific concentration.)
<b>Immunogen</b>	Recombinant protein encompassing a sequence within the center region of human GNB1. The exact sequence is proprietary.
<b>Purification</b>	Purified by antigen-affinity chromatography.



For full product information, images and publications, please visit our [website](#).

**Conjugation**

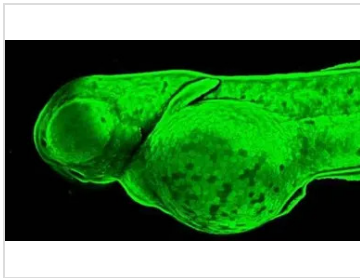
Unconjugated

**Note**

For laboratory research use only. Not for any clinical, therapeutic, or diagnostic use in humans or animals. Not for animal or human consumption.

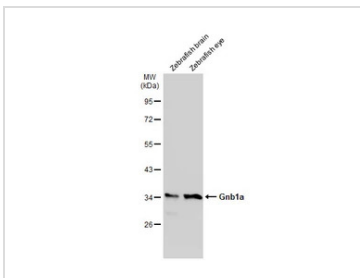
Purchasers shall not, and agree not to enable third parties to, analyze, copy, reverse engineer or otherwise attempt to determine the structure or sequence of the product.

DATA IMAGES



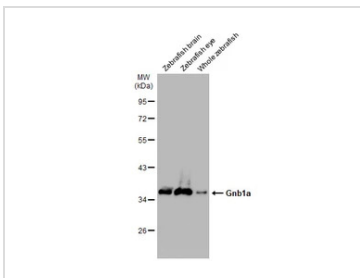
**GTX114442 IHC-Wm Image**

Immunohistochemical analysis (whole mount) of zebrafish embryo, using GNB1 antibody (GTX114442) at 1:200 dilution.



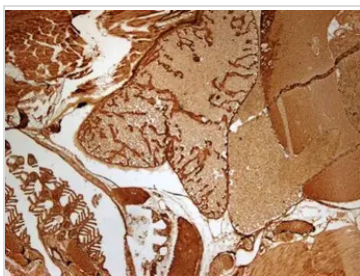
**GTX114442 WB Image**

Various tissue extracts (30 µg) were separated by 10% SDS-PAGE, and the membrane was blotted with GNB1 antibody (GTX114442) diluted at 1:10000. The HRP-conjugated anti-rabbit IgG antibody (GTX213110-01) was used to detect the primary antibody.



**GTX114442 WB Image**

Various tissue extracts (30 µg) were separated by 10% SDS-PAGE, and the membrane was blotted with GNB1 antibody (GTX114442) diluted at 1:10000. The HRP-conjugated anti-rabbit IgG antibody (GTX213110-01) was used to detect the primary antibody.



**GTX114442 IHC-P Image**

Immunohistochemical analysis of paraffin-embedded zebrafish tissue, using GNB1 antibody (GTX114442) at 1:300 dilution.



For full product information, images and publications, please visit our [website](#).