

TFIIF antibody

Cat. No. GTX114455

Host	Rabbit
Clonality	Polyclonal
Isotype	IgG
Applications	WB, IP, ChIP assay
Reactivity	Human, Mouse

References (2)

Package

100 µl, 25 µl

Applications

Application Note

*Optimal dilutions/concentrations should be determined by the researcher.

Suggested dilution	Recommended dilution
WB	1:500-1:3000
IP	1:100-1:500
ChIP assay	Assay dependent

Not tested in other applications.

Calculated MW 58 kDa. ([Note](#))

Product Note Knockdown/Knockout validation was supported by references (PMID:26990993)

Properties

Form	Liquid
Buffer	PBS, 1% BSA, 20% Glycerol
Preservative	0.01% Thimerosal
Storage	Store as concentrated solution. Centrifuge briefly prior to opening vial. For short-term storage (1-2 weeks), store at 4°C. For long-term storage, aliquot and store at -20°C or below. Avoid multiple freeze-thaw cycles.
Concentration	1 mg/ml (Please refer to the vial label for the specific concentration.)
Immunogen	Recombinant protein encompassing a sequence within the center region of human TFIIF. The exact sequence is proprietary.
Purification	Purified by antigen-affinity chromatography.
Conjugation	Unconjugated

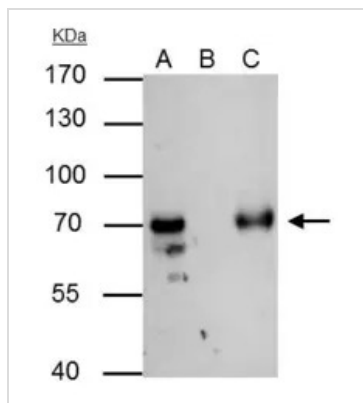


For full product information, images and publications, please visit our [website](#).

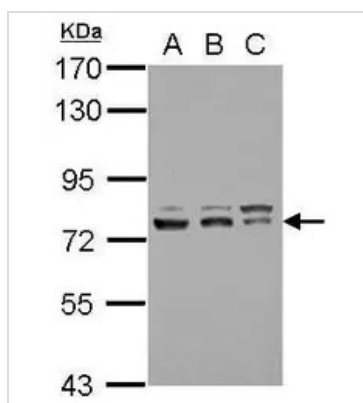
For laboratory research use only. Not for any clinical, therapeutic, or diagnostic use in humans or animals. Not for animal or human consumption.

Note

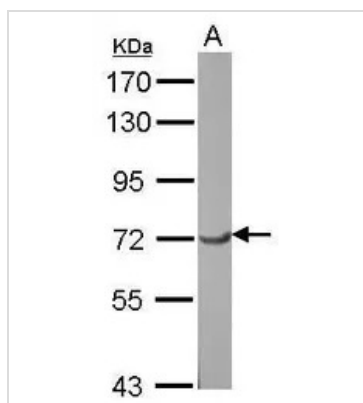
Purchasers shall not, and agree not to enable third parties to, analyze, copy, reverse engineer or otherwise attempt to determine the structure or sequence of the product.

DATA IMAGES

GTx114455 IP Image

TFIIIF antibody immunoprecipitates TFIIIF protein in IP experiments. IP Sample: 293T whole cell lysate/extract
A : 30 µg whole cell lysate/extract of TFIIIF protein expressing 293T cells B : Control with 2.5 µg of pre-immune rabbit IgG C : Immunoprecipitation of TFIIIF by 2.5 µg of TFIIIF antibody (GTx114455) 7.5% SDS-PAGE The immunoprecipitated TFIIIF protein was detected by TFIIIF antibody (GTx114455) diluted at 1 : 1000. EasyBlot anti-rabbit IgG (HRP) (GTx221666-01) was used as a secondary reagent.


GTx114455 WB Image

Sample (30 ug of whole cell lysate)
A: 293T
B: A431
C: HeLa
7.5% SDS PAGE
GTx114455 diluted at 1:3000


GTx114455 WB Image

Sample (30 ug of whole cell lysate)
A: NIH-3T3
7.5% SDS PAGE
GTx114455 diluted at 1:3000



For full product information, images and publications, please visit our [website](https://www.genetex.com).