

## Histone H1.0 antibody

Cat. No. GTX114462

|                     |                   |
|---------------------|-------------------|
| <b>Host</b>         | Rabbit            |
| <b>Clonality</b>    | Polyclonal        |
| <b>Isotype</b>      | IgG               |
| <b>Applications</b> | WB, ICC/IF, IHC-P |
| <b>Reactivity</b>   | Human, Mouse, Rat |

References ( 8 )

Package

100 µl, 25 µl

## Applications

## Application Note

\*Optimal dilutions/concentrations should be determined by the researcher.

| Suggested dilution | Recommended dilution |
|--------------------|----------------------|
| WB                 | 1:1000-1:20000       |
| ICC/IF             | 1:100-1:1000         |
| IHC-P              | 1:100-1:1000         |

Not tested in other applications.

Calculated MW 21 kDa. ( [Note](#) )

## Properties

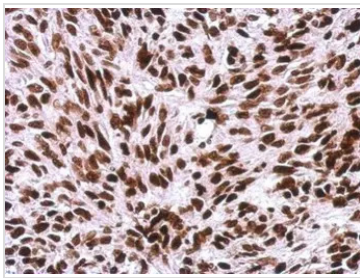
|                      |  |
|----------------------|--|
| <b>Form</b>          | Liquid   |
| <b>Buffer</b>        | PBS, 20% Glycerol  |
| <b>Preservative</b>  | 0.025% ProClin 300   |
| <b>Storage</b>       | Store as concentrated solution. Centrifuge briefly prior to opening vial. For short-term storage (1-2 weeks), store at 4°C. For long-term storage, aliquot and store at -20°C or below. Avoid multiple freeze-thaw cycles. |
| <b>Concentration</b> | 0.53 mg/ml (Please refer to the vial label for the specific concentration.)  |
| <b>Immunogen</b>     | Recombinant protein encompassing a sequence within the center region of human Histone H1.0. The exact sequence is proprietary.   |
| <b>Purification</b>  | Purified by antigen-affinity chromatography.   |
| <b>Conjugation</b>   | Unconjugated   |

## Note

For laboratory research use only. Not for any clinical, therapeutic, or diagnostic use in humans or animals. Not for animal or human consumption.

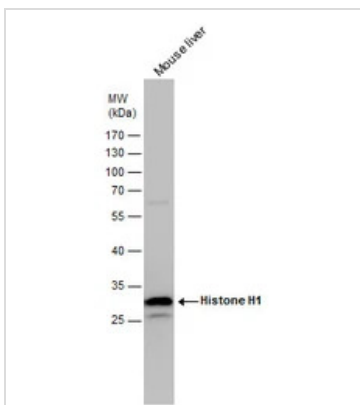
Purchasers shall not, and agree not to enable third parties to, analyze, copy, reverse engineer or otherwise attempt to determine the structure or sequence of the product.

For full product information, images and publications, please visit our [website](#).

**DATA IMAGES**

**GTx114462 IHC-P Image**

Immunohistochemical analysis of paraffin-embedded SkHep1 xenograft, using Histone H1.0(GTx114462) antibody at 1:500 dilution.

Antigen Retrieval: Trilogy™ (EDTA based, pH 8.0) buffer, 15min


**GTx114462 WB Image**

Histone H1 antibody detects Histone H1 protein by western blot analysis. Mouse tissue extracts (50 µg) was separated by 12% SDS-PAGE, and the membrane was blotted with Histone H1 antibody (GTx114462) diluted by 1:5000. The HRP-conjugated anti-rabbit IgG antibody (GTx213110-01) was used to detect the primary antibody.

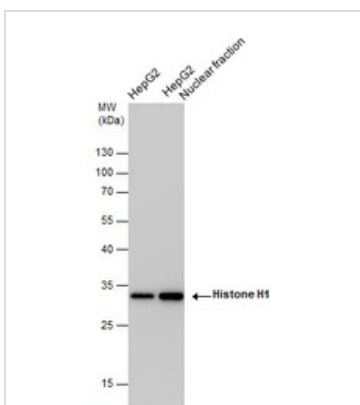

**GTx114462 IHC-P Image**

Histone H1.0 antibody detects Histone H1.0 protein at nucleus on rat fore brain by immunohistochemical analysis.

Sample: Paraffin-embedded rat fore brain.

Histone H1.0 antibody (GTx114462) dilution: 1:500.

Antigen Retrieval: Trilogy™ (EDTA based, pH 8.0) buffer, 15min


**GTx114462 WB Image**

Histone H1 antibody detects Histone H1 protein by western blot analysis. HepG2 whole cell extracts and nuclear extracts (30 µg) were separated by 12% SDS-PAGE, and the membrane was blotted with Histone H1 antibody (GTx114462) at a dilution of 1:10000 and developed with Trident femto Western HRP Substrate (GTx14698). The HRP-conjugated anti-rabbit IgG antibody (GTx213110-01) was used to detect the primary antibody.



For full product information, images and publications, please visit our [website](https://www.genetex.com).