

IL2 antibody [MQ1-17H12]

Cat. No. GTX11448

Host	Rat
Clonality	Monoclonal
Isotype	IgG2a
Applications	FCM, ELISA
Reactivity	Human, Cynomolgus monkey

Package
250 µg

Applications

Application Note

*Optimal dilutions/concentrations should be determined by the researcher.

Suggested dilution	Recommended dilution
FCM	Assay dependent
ELISA	Assay dependent

Not tested in other applications.

Properties

Form	Liquid
Buffer	PBS
Preservative	0.09% Sodium azide
Storage	Store as concentrated solution. Centrifuge briefly prior to opening vial. For short-term storage (1-2 weeks), store at 4°C. For long-term storage, aliquot and store at -20°C or below. Avoid multiple freeze-thaw cycles.
Concentration	1.0 mg/ml (Please refer to the vial label for the specific concentration.)
Purification	Protein G purified From tissue culture supernatant
Conjugation	Unconjugated

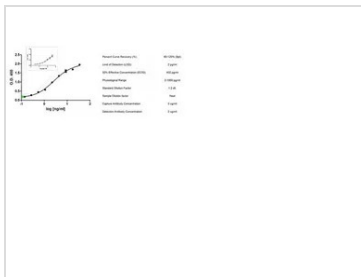
Note

For laboratory research use only. Not for any clinical, therapeutic, or diagnostic use in humans or animals. Not for animal or human consumption.

Purchasers shall not, and agree not to enable third parties to, analyze, copy, reverse engineer or otherwise attempt to determine the structure or sequence of the product.



For full product information, images and publications, please visit our [website](#).

DATA IMAGES

GTX11448 ELISA Image

Sandwich ELISA analysis of human interleukin-2 using Rat anti Human IL-2 (GTX11448) as a capture reagent and biotinylated Rabbit anti Human IL-2 (GTX43856) as a detection reagent. In the enlargement, neat serum (orange) and neat plasma (green) samples, low levels of human IL-2 (~1pg/ml) are detected.



For full product information, images and publications, please visit our [website](https://www.genetex.com).