

## IVD antibody

Cat. No. GTX114502

Host	Rabbit
Clonality	Polyclonal
Isotype	IgG
Applications	WB, ICC/IF, IHC-P
Reactivity	Human, Mouse, Rat

Package  
100 µl, 25 µl

## Applications

## Application Note

\*Optimal dilutions/concentrations should be determined by the researcher.

Suggested dilution	Recommended dilution
WB	1:500-1:3000
ICC/IF	1:100-1:1000
IHC-P	1:100-1:1000

Not tested in other applications.

Calculated MW 46 kDa. ( [Note](#) )

## Properties

Form	Liquid
Buffer	0.1M Tris, 0.1M Glycine, 20% Glycerol
Preservative	0.01% Thimerosal
Storage	Store as concentrated solution. Centrifuge briefly prior to opening vial. For short-term storage (1-2 weeks), store at 4°C. For long-term storage, aliquot and store at -20°C or below. Avoid multiple freeze-thaw cycles.
Concentration	1 mg/ml (Please refer to the vial label for the specific concentration.)
Immunogen	Recombinant protein encompassing a sequence within the center region of human IVD. The exact sequence is proprietary.
Purification	Purified by antigen-affinity chromatography.
Conjugation	Unconjugated

## Note

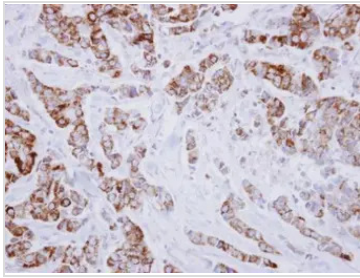
For laboratory research use only. Not for any clinical, therapeutic, or diagnostic use in humans or animals. Not for animal or human consumption.

Purchasers shall not, and agree not to enable third parties to, analyze, copy, reverse engineer or otherwise attempt to determine the structure or sequence of the product.



For full product information, images and publications, please visit our [website](#).

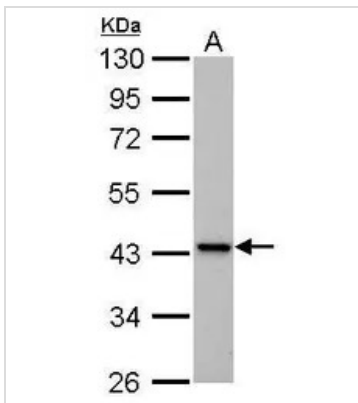
## DATA IMAGES



### GTX114502 IHC-P Image

Immunohistochemical analysis of paraffin-embedded human breast cancer, using IVD(GTX114502) antibody at 1:250 dilution.

Antigen Retrieval: Trilogy™ (EDTA based, pH 8.0) buffer, 15min



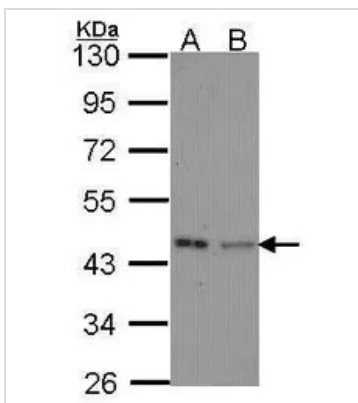
### GTX114502 WB Image

IVD antibody detects IVD protein by Western blot analysis.

A. 30 µg PC-12 whole cell lysate/extract

10 % SDS-PAGE

IVD antibody (GTX114502) dilution: 1:1000



### GTX114502 WB Image

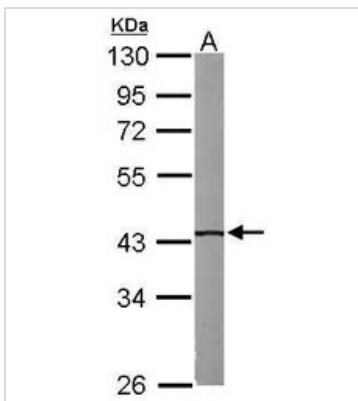
Sample (30 ug of whole cell lysate)

A: HeLa

B: JurKat

10% SDS PAGE

GTX114502 diluted at 1:1000



### GTX114502 WB Image

Sample (50 ug of whole cell lysate)

A: Mouse brain

10% SDS PAGE

GTX114502 diluted at 1:1000



For full product information, images and publications, please visit our [website](https://www.genetex.com).