

IPO5 antibody

Cat. No. GTX114514

| | |
|--------------|------------|
| Host | Rabbit |
| Clonality | Polyclonal |
| Isotype | IgG |
| Applications | IHC-P |
| Reactivity | Mouse, Rat |

Package
100 µl, 25 µl

Applications

Application Note

*Optimal dilutions/concentrations should be determined by the researcher.

| Suggested dilution | Recommended dilution |
|--------------------|----------------------|
| IHC-P | 1:100-1:1000 |

Not tested in other applications.

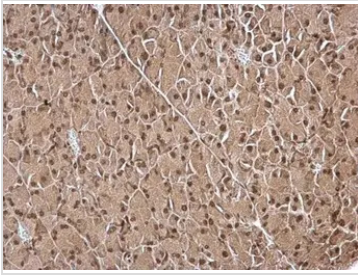
Properties

| | |
|---------------|---|
| Form | Liquid |
| Buffer | PBS, 20% Glycerol |
| Preservative | 0.01% Thimerosal |
| Storage | Store as concentrated solution. Centrifuge briefly prior to opening vial. For short-term storage (1-2 weeks), store at 4°C. For long-term storage, aliquot and store at -20°C or below. Avoid multiple freeze-thaw cycles. |
| Concentration | 1 mg/ml (Please refer to the vial label for the specific concentration.) |
| Immunogen | Recombinant protein encompassing a sequence within the C-terminus region of human IPO5. The exact sequence is proprietary. |
| Purification | Purified by antigen-affinity chromatography. |
| Conjugation | Unconjugated |
| Note | <p>For laboratory research use only. Not for any clinical, therapeutic, or diagnostic use in humans or animals. Not for animal or human consumption.</p> <p>Purchasers shall not, and agree not to enable third parties to, analyze, copy, reverse engineer or otherwise attempt to determine the structure or sequence of the product.</p> |



For full product information, images and publications, please visit our [website](#).

DATA IMAGES



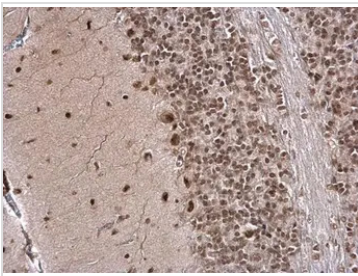
GTx114514 IHC-P Image

IPO5 antibody detects IPO5 protein at nucleus on mouse pancreas by immunohistochemical analysis.

Sample: Paraffin-embedded mouse pancreas.

IPO5 antibody (GTx114514) dilution: 1:500.

Antigen Retrieval: Trilogy™ (EDTA based, pH 8.0) buffer, 15min



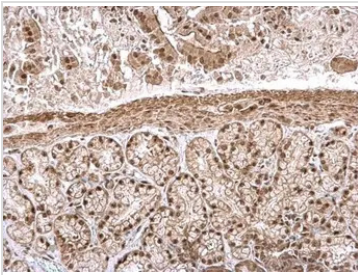
GTx114514 IHC-P Image

IPO5 antibody detects IPO5 protein at nucleus on rat hind brain by immunohistochemical analysis.

Sample: Paraffin-embedded rat hind brain.

IPO5 antibody (GTx114514) dilution: 1:500.

Antigen Retrieval: Trilogy™ (EDTA based, pH 8.0) buffer, 15min



GTx114514 IHC-P Image

IPO5 antibody detects IPO5 protein at nucleus on mouse pancreas by immunohistochemical analysis.

Sample: Paraffin-embedded mouse pancreas.

IPO5 antibody (GTx114514) dilution: 1:500.

Antigen Retrieval: Trilogy™ (EDTA based, pH 8.0) buffer, 15min



For full product information, images and publications, please visit our [website](#).