

Lactate Dehydrogenase C antibody

Cat. No. GTX114525

Host	Rabbit
Clonality	Polyclonal
Isotype	IgG
Applications	WB, ICC/IF, IHC-P, IHC-Fr
Reactivity	Human

References (2)

Package

100 µl, 25 µl

Applications

Application Note

*Optimal dilutions/concentrations should be determined by the researcher.

Suggested dilution	Recommended dilution
WB	1:5000-1:20000
ICC/IF	1:100-1:1000
IHC-P	1:100-1:1000
IHC-Fr	Assay dependent

Not tested in other applications.

Calculated MW 36 kDa. ([Note](#))

Properties

Form	Liquid
Buffer	PBS, 1% BSA, 20% Glycerol
Preservative	0.01% Thimerosal
Storage	Store as concentrated solution. Centrifuge briefly prior to opening vial. For short-term storage (1-2 weeks), store at 4°C. For long-term storage, aliquot and store at -20°C or below. Avoid multiple freeze-thaw cycles.
Concentration	1 mg/ml (Please refer to the vial label for the specific concentration.)
Immunogen	Recombinant protein encompassing a sequence within the center region of human Lactate Dehydrogenase C. The exact sequence is proprietary.
Purification	Purified by antigen-affinity chromatography.
Conjugation	Unconjugated



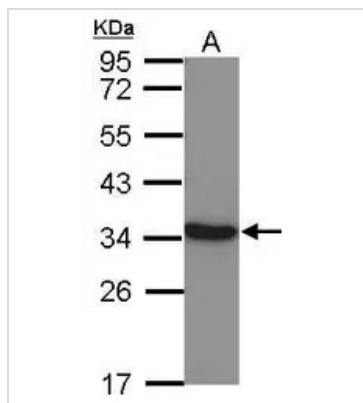
For full product information, images and publications, please visit our [website](#).

For laboratory research use only. Not for any clinical, therapeutic, or diagnostic use in humans or animals. Not for animal or human consumption.

Note

Purchasers shall not, and agree not to enable third parties to, analyze, copy, reverse engineer or otherwise attempt to determine the structure or sequence of the product.

DATA IMAGES



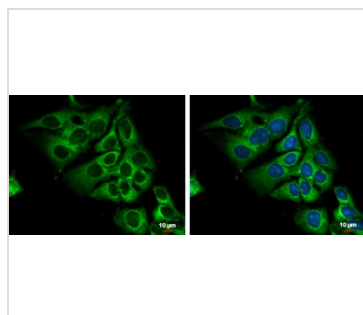
GTx114525 WB Image

Sample (30 ug of whole cell lysate)

A: NT2D1

10% SDS PAGE

GTx114525 diluted at 1:10000



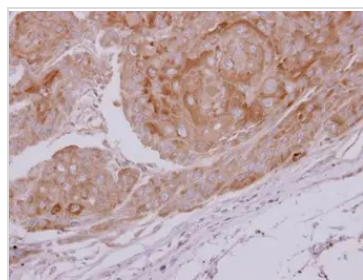
GTx114525 ICC/IF Image

lactate dehydrogenase C antibody detects lactate dehydrogenase C protein at cytoplasm by immunofluorescent analysis.

Sample: NT2D1 cells were fixed in ice-cold MeOH for 5 min.

Green: lactate dehydrogenase C protein stained by lactate dehydrogenase C antibody (GTx114525) diluted at 1:500.

Blue: Hoechst 33342 staining.



GTx114525 IHC-P Image

lactate dehydrogenase C antibody detects LDHC protein at cytoplasm on human ovarian carcinoma by immunohistochemical analysis.

Sample: Paraffin-embedded ovarian carcinoma.

lactate dehydrogenase C antibody (GTx114525) dilution: 1:500.

Antigen Retrieval: Trilogy™ (EDTA based, pH 8.0) buffer, 15min



For full product information, images and publications, please visit our [website](https://www.genetex.com).