

## MAFG antibody

Cat. No. GTX114541

Host	Rabbit
Clonality	Polyclonal
Isotype	IgG
Applications	WB, ICC/IF, IHC-P, IP, ChIP assay, ChIP-seq
Reactivity	Human, Mouse, Rat

References ( 9 )

Package

100 µl, 25 µl

## Applications

## Application Note

\*Optimal dilutions/concentrations should be determined by the researcher.

Suggested dilution	Recommended dilution
WB	1:500-1:3000
ICC/IF	1:100-1:1000
IHC-P	1:100-1:1000
IP	1:100-1:500
ChIP assay	Assay dependent
ChIP-seq	Assay dependent

Not tested in other applications.

Calculated MW 18 kDa. ( [Note](#) )

## Properties

Form	Liquid
Buffer	PBS, 20% Glycerol
Preservative	0.025% ProClin 300
Storage	Store as concentrated solution. Centrifuge briefly prior to opening vial. For short-term storage (1-2 weeks), store at 4°C. For long-term storage, aliquot and store at -20°C or below. Avoid multiple freeze-thaw cycles.
Concentration	1.3 mg/ml (Please refer to the vial label for the specific concentration.)
Immunogen	Recombinant protein encompassing a sequence within the center region of human MAFG. The exact sequence is proprietary.
Purification	Purified by antigen-affinity chromatography.
Conjugation	Unconjugated

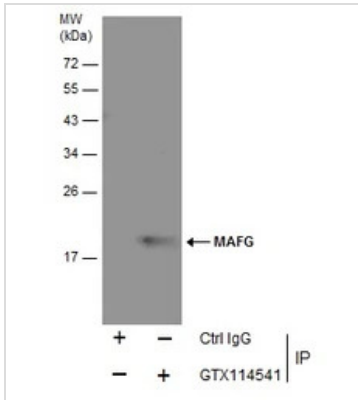
For full product information, images and publications, please visit our [website](#).

For laboratory research use only. Not for any clinical, therapeutic, or diagnostic use in humans or animals. Not for animal or human consumption.

## Note

Purchasers shall not, and agree not to enable third parties to, analyze, copy, reverse engineer or otherwise attempt to determine the structure or sequence of the product.

## DATA IMAGES

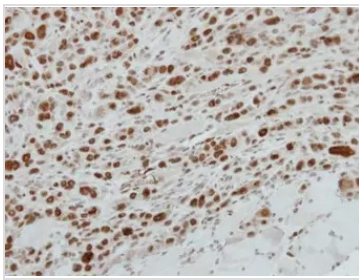


### GTX114541 IP Image

Immunoprecipitation of MAFG protein from HeLa whole cell extracts using 5 µg of MAFG antibody (GTX114541) .

Western blot analysis was performed using MAFG antibody (GTX114541) diluted at 1:500.

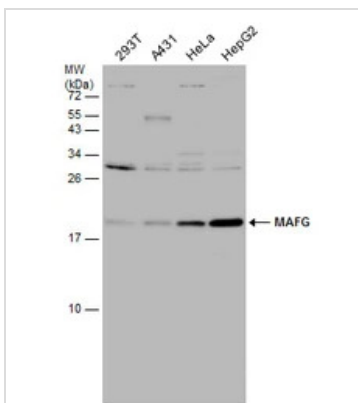
EasyBlot anti-Mouse IgG (GTX221667-01) was used as a secondary reagent.



### GTX114541 IHC-P Image

Immunohistochemical analysis of paraffin-embedded PC9 xenograft, using MAFG(GTX114541) antibody at 1:500 dilution.

Antigen Retrieval: Trilogy™ (EDTA based, pH 8.0) buffer, 15min



### GTX114541 WB Image

Various whole cell extracts (30 µg) were separated by 15% SDS-PAGE, and the membrane was blotted with MAFG antibody (GTX114541) diluted at 1:1000.



For full product information, images and publications, please visit our [website](https://www.genetex.com).