

## NFIA antibody

Cat. No. GTX114580

Host	Rabbit
Clonality	Polyclonal
Isotype	IgG
Applications	WB, ICC/IF, IHC-P
Reactivity	Human, Rat

Package  
100 µl, 25 µl

## Applications

## Application Note

\*Optimal dilutions/concentrations should be determined by the researcher.

Suggested dilution	Recommended dilution
WB	1:500-1:3000
ICC/IF	1:100-1:1000
IHC-P	1:100-1:1000

Not tested in other applications.

Calculated MW 56 kDa. ( [Note](#) )

## Properties

Form	Liquid
Buffer	PBS, 1% BSA, 20% Glycerol
Preservative	0.025% ProClin 300
Storage	Store as concentrated solution. Centrifuge briefly prior to opening vial. For short-term storage (1-2 weeks), store at 4°C. For long-term storage, aliquot and store at -20°C or below. Avoid multiple freeze-thaw cycles.
Concentration	0.12 mg/ml (Please refer to the vial label for the specific concentration.)
Immunogen	Recombinant protein encompassing a sequence within the center region of human NFIA. The exact sequence is proprietary.
Purification	Purified by antigen-affinity chromatography.
Conjugation	Unconjugated

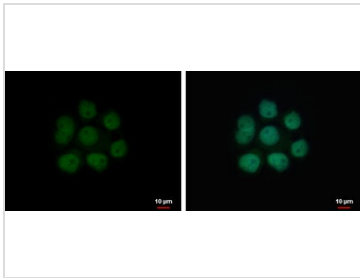
## Note

For laboratory research use only. Not for any clinical, therapeutic, or diagnostic use in humans or animals. Not for animal or human consumption.

Purchasers shall not, and agree not to enable third parties to, analyze, copy, reverse engineer or otherwise attempt to determine the structure or sequence of the product.



For full product information, images and publications, please visit our [website](#).

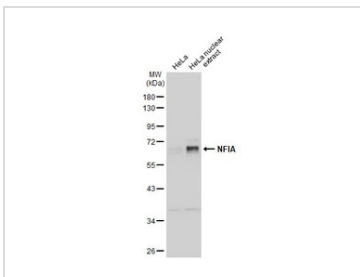
**DATA IMAGES**

**GTXT114580 ICC/IF Image**

NFIA antibody detects NFIA protein at nucleus by immunofluorescent analysis.

Sample: A431 cells were fixed in 4% paraformaldehyde at RT for 15 min.

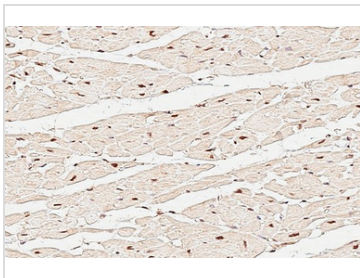
Green: NFIA protein stained by NFIA antibody (GTXT114580) diluted at 1:1000.

Blue: Hoechst 33342 staining.


**GTXT114580 WB Image**

HeLa whole cell and nuclear extracts (30 μg) were separated by 10% SDS-PAGE, and the membrane was

blotted with NFIA antibody (GTXT114580) diluted at 1:10000. The HRP-conjugated anti-rabbit IgG antibody (GTXT213110-01) was used to detect the primary antibody.

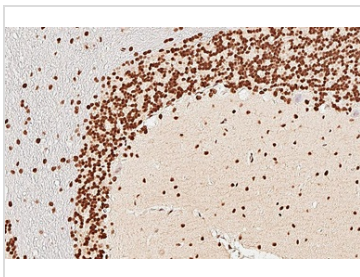

**GTXT114580 IHC-P Image**

NFIA antibody detects NFIA protein by immunohistochemical analysis.

Sample: Paraffin-embedded human heart.

NFIA stained by NFIA antibody (GTXT114580) diluted at 1:500.

Antigen Retrieval: Citrate buffer, pH 6.0, 15 min


**GTXT114580 IHC-P Image**

NFIA antibody detects NFIA protein by immunohistochemical analysis.

Sample: Paraffin-embedded rat cerebellum.

NFIA stained by NFIA antibody (GTXT114580) diluted at 1:500.

Antigen Retrieval: Citrate buffer, pH 6.0, 15 min


**GTXT114580 IHC-P Image**

NFIA antibody detects NFIA protein by immunohistochemical analysis.

Sample: Paraffin-embedded rat hippocampus.

NFIA stained by NFIA antibody (GTXT114580) diluted at 1:500.

Antigen Retrieval: Citrate buffer, pH 6.0, 15 min



For full product information, images and publications, please visit our [website](https://www.genetex.com).