

OMG antibody

Cat. No. GTX114599

Host	Rabbit
Clonality	Polyclonal
Isotype	IgG
Application	WB, IHC-P
Reactivity	Human, Mouse, Rat

Package
100 µl, 25 µl

APPLICATION

Application Note

*Optimal dilutions/concentrations should be determined by the researcher.

Suggested dilution	Recommended dilution
WB	1:500-1:3000
IHC-P	1:100-1:1000

Not tested in other applications.

Calculated MW 50 kDa. ([Note](#))

PROPERTIES

Form	Liquid
Buffer	PBS, 20% Glycerol
Preservative	0.01% Thimerosal
Storage	Store as concentrated solution. Centrifuge briefly prior to opening vial. For short-term storage (1-2 weeks), store at 4°C. For long-term storage, aliquot and store at -20°C or below. Avoid multiple freeze-thaw cycles.
Concentration	1 mg/ml (Please refer to the vial label for the specific concentration.)
Immunogen	Recombinant protein encompassing a sequence within the C-terminus region of human OMG. The exact sequence is proprietary.
Purification	Purified by antigen-affinity chromatography.
Conjugation	Unconjugated

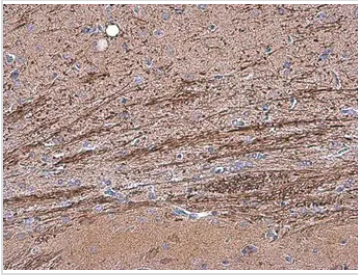
Note

For laboratory research use only. Not for any clinical, therapeutic, or diagnostic use in humans or animals. Not for animal or human consumption.

Purchasers shall not, and agree not to enable third parties to, analyze, copy, reverse engineer or otherwise attempt to determine the structure or sequence of the product.



For full product information, images and publications, please visit our [website](#).

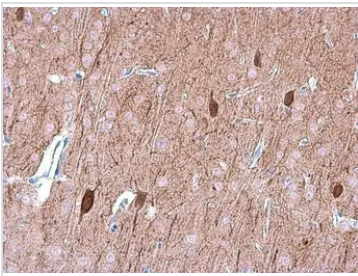
DATA IMAGES

GTX114599 IHC-P Image

OMG antibody detects OMG protein at cell membrane in rat brain by immunohistochemical analysis.

Sample: Paraffin-embedded rat brain.

OMG antibody (GTX114599) diluted at 1:500.

Antigen Retrieval: Citrate buffer, pH 6.0, 15 min

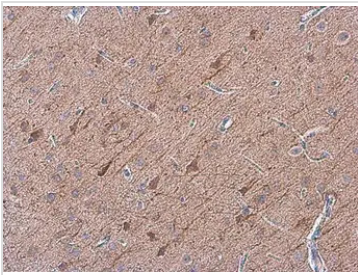

GTX114599 IHC-P Image

OMG antibody detects OMG protein at cell membrane in mouse brain by immunohistochemical analysis.

Sample: Paraffin-embedded mouse brain.

OMG antibody (GTX114599) diluted at 1:500.

Antigen Retrieval: Citrate buffer, pH 6.0, 15 min

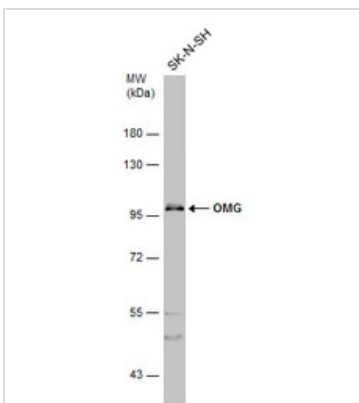

GTX114599 IHC-P Image

OMG antibody detects OMG protein at cell membrane in rat brain by immunohistochemical analysis.

Sample: Paraffin-embedded rat brain.

OMG antibody (GTX114599) diluted at 1:500.

Antigen Retrieval: Citrate buffer, pH 6.0, 15 min


GTX114599 WB Image

Whole cell extract (30 µg) was separated by 7.5% SDS-PAGE, and the membrane was blotted with OMG antibody (GTX114599) diluted at 1:500.

The observed M.W. is based on the publication: [PMID: 17364021](https://pubmed.ncbi.nlm.nih.gov/17364021/)



For full product information, images and publications, please visit our [website](https://www.genetex.com).