

TCR gamma + delta antibody [GL3] (FITC)

Cat. No. GTX11467

Host	Armenian Hamster
Clonality	Monoclonal
Isotype	IgG
Applications	FCM
Reactivity	Mouse

Package
100 µg

Applications

Application Note

*Optimal dilutions/concentrations should be determined by the researcher.

Suggested dilution	Recommended dilution
FCM	Assay dependent

Not tested in other applications.

Product Note Mouse TCR gamma/delta

Properties

Form	Liquid
Buffer	PBS, BSA
Preservative	0.02% Sodium azide
Storage	Store as concentrated solution. Centrifuge briefly prior to opening vial. For short-term storage (1-2 weeks), store at 4°C. For long-term storage, aliquot and store at -20°C or below. Avoid multiple freeze-thaw cycles. Protect from light.
Concentration	0.1 mg/ml (Please refer to the vial label for the specific concentration.)
Immunogen	C57BL/6J intraepithelial lymphocytes
Purification	Protein G affinity purified.
Conjugation	Fluorescein isothiocyanate (FITC) Wavelength

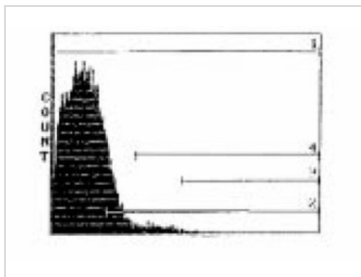
Note

For laboratory research use only. Not for any clinical, therapeutic, or diagnostic use in humans or animals. Not for animal or human consumption.

Purchasers shall not, and agree not to enable third parties to, analyze, copy, reverse engineer or otherwise attempt to determine the structure or sequence of the product.



For full product information, images and publications, please visit our [website](#).

DATA IMAGES

GTX11467 FCM Image

Staining of splenic T cells using TCR gamma + delta: FITC antibody (GTX11467) and FITC hamster IgG isotype control.



For full product information, images and publications, please visit our [website](https://www.genetex.com).