

RanGAP1 antibody [N1N3]

Cat. No. GTX114700

Host	Rabbit
Clonality	Polyclonal
Isotype	IgG
Applications	WB
Reactivity	Human, Mouse, Rat

Package

100 µl, 25 µl

Applications

Application Note

*Optimal dilutions/concentrations should be determined by the researcher.

Suggested dilution	Recommended dilution
WB	1:500-1:10000

Not tested in other applications.

Calculated MW 64 kDa. ([Note](#))

Properties

Form	Liquid
Buffer	0.1M Tris, 0.1M Glycine, 20% Glycerol
Preservative	0.01% Thimerosal
Storage	Store as concentrated solution. Centrifuge briefly prior to opening vial. For short-term storage (1-2 weeks), store at 4°C. For long-term storage, aliquot and store at -20°C or below. Avoid multiple freeze-thaw cycles.
Concentration	1 mg/ml (Please refer to the vial label for the specific concentration.)
Immunogen	Recombinant protein encompassing a sequence within the N-terminus region of human RanGAP1. The exact sequence is proprietary.
Purification	Purified by antigen-affinity chromatography.
Conjugation	Unconjugated

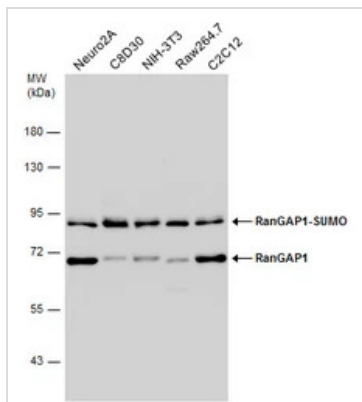
Note

For laboratory research use only. Not for any clinical, therapeutic, or diagnostic use in humans or animals. Not for animal or human consumption.

Purchasers shall not, and agree not to enable third parties to, analyze, copy, reverse engineer or otherwise attempt to determine the structure or sequence of the product.

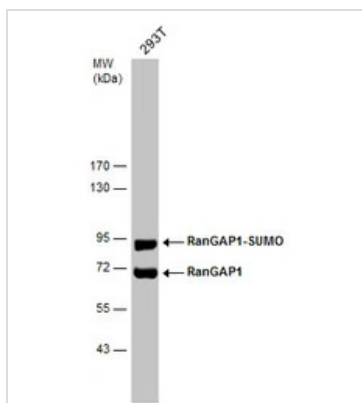


For full product information, images and publications, please visit our [website](#).

DATA IMAGES

GTX114700 WB Image

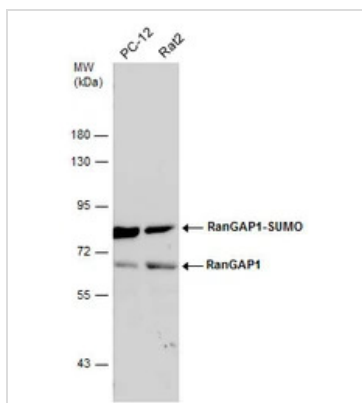
Various whole cell extracts (30 µg) were separated by 7.5% SDS-PAGE, and the membrane was blotted with RanGAP1 antibody [N1N3] (GTX114700) diluted at 1:2000.

The observed M.W. is based on the publication: [PMID: 18706886](https://pubmed.ncbi.nlm.nih.gov/18706886/)


GTX114700 WB Image

Whole cell extract (30 µg) was separated by 7.5% SDS-PAGE, and the membrane was blotted with RanGAP1 antibody [N1N3] (GTX114700) diluted at 1:5000.

The observed M.W. is based on the publication: [PMID: 18706886](https://pubmed.ncbi.nlm.nih.gov/18706886/)


GTX114700 WB Image

Various whole cell extracts (30 µg) were separated by 7.5% SDS-PAGE, and the membrane was blotted with RanGAP1 antibody [N1N3] (GTX114700) diluted at 1:2000.

The observed M.W. is based on the publication: [PMID: 18706886](https://pubmed.ncbi.nlm.nih.gov/18706886/)



For full product information, images and publications, please visit our [website](https://www.genetex.com).