

RBP3 antibody [C2C3], C-term

Cat. No. GTX114714

| | |
|---------------------|---------------|
| Host | Rabbit |
| Clonality | Polyclonal |
| Isotype | IgG |
| Applications | ICC/IF, IHC-P |
| Reactivity | Human, Mouse |

Package
100 µl, 25 µl

Applications

Application Note

*Optimal dilutions/concentrations should be determined by the researcher.

| Suggested dilution | Recommended dilution |
|--------------------|----------------------|
| ICC/IF | 1:100-1:1000 |
| IHC-P | 1:100-1:1000 |

Not tested in other applications.

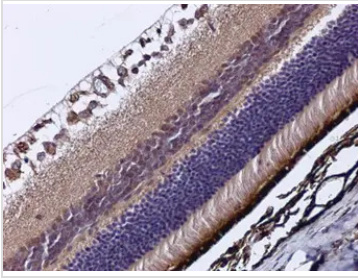
Properties

| | |
|----------------------|--------------------------------------------------------------------------------------------------------------------------------------------------------------------------------------------------------------------------------------------------------------------------------------------------------------------------------------|
| Form | Liquid |
| Buffer | 0.1M Tris, 0.1M Glycine, 20% Glycerol |
| Preservative | 0.01% Thimerosal |
| Storage | Store as concentrated solution. Centrifuge briefly prior to opening vial. For short-term storage (1-2 weeks), store at 4°C. For long-term storage, aliquot and store at -20°C or below. Avoid multiple freeze-thaw cycles. |
| Concentration | 0.56 mg/ml (Please refer to the vial label for the specific concentration.) |
| Immunogen | Recombinant protein encompassing a sequence within the C-terminus region of human RBP3. The exact sequence is proprietary. |
| Purification | Purified by antigen-affinity chromatography. |
| Conjugation | Unconjugated |
| Note | For laboratory research use only. Not for any clinical, therapeutic, or diagnostic use in humans or animals. Not for animal or human consumption. Purchasers shall not, and agree not to enable third parties to, analyze, copy, reverse engineer or otherwise attempt to determine the structure or sequence of the product. |



For full product information, images and publications, please visit our [website](#).

DATA IMAGES



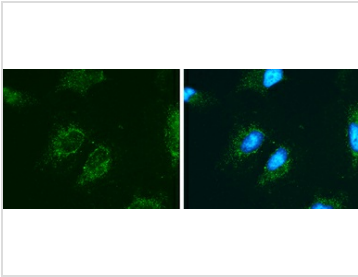
GTx114714 IHC-P Image

RBP3 antibody [C2C3], C-term detects RBP3 protein at cytoplasm in mouse eye by immunohistochemical analysis.

Sample: Paraffin-embedded mouse eye.

RBP3 antibody [C2C3], C-term (GTx114714) diluted at 1:500.

Antigen Retrieval: Citrate buffer, pH 6.0, 15 min



GTx114714 ICC/IF Image

RBP3 antibody [C2C3], C-term detects RBP3 protein at cytoplasm by immunofluorescent analysis.

Sample: HeLa cells were fixed in ice-cold MeOH for 5 min.

Green: RBP3 protein stained by RBP3 antibody [C2C3], C-term (GTx114714) diluted at 1:400.

Blue: Hoechst 33342 staining.



For full product information, images and publications, please visit our [website](#).