

## MRPL12 antibody [N1C3]

Cat. No. GTX114731

Host	Rabbit
Clonality	Polyclonal
Isotype	IgG
Applications	WB, ICC/IF, IHC-P, PLA
Reactivity	Human, Mouse

References ( 1 )

Package

100 µl, 25 µl

## Applications

## Application Note

\*Optimal dilutions/concentrations should be determined by the researcher.

Suggested dilution	Recommended dilution
WB	1:500-1:3000
ICC/IF	1:100-1:1000
IHC-P	1:100-1:1000
PLA	Assay dependent

Not tested in other applications.

Calculated MW 21 kDa. ( [Note](#) )

## Properties

Form	Liquid
Buffer	0.1M Tris, 0.1M Glycine, 20% Glycerol
Preservative	0.01% Thimerosal
Storage	Store as concentrated solution. Centrifuge briefly prior to opening vial. For short-term storage (1-2 weeks), store at 4°C. For long-term storage, aliquot and store at -20°C or below. Avoid multiple freeze-thaw cycles.
Concentration	0.56 mg/ml (Please refer to the vial label for the specific concentration.)
Immunogen	Recombinant protein encompassing a sequence within the center region of human MRPL12. The exact sequence is proprietary.
Purification	Purified by antigen-affinity chromatography.
Conjugation	Unconjugated



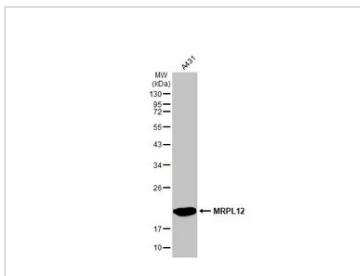
For full product information, images and publications, please visit our [website](#).

For laboratory research use only. Not for any clinical, therapeutic, or diagnostic use in humans or animals. Not for animal or human consumption.

## Note

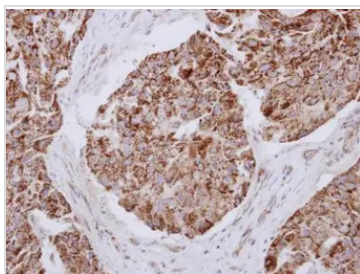
Purchasers shall not, and agree not to enable third parties to, analyze, copy, reverse engineer or otherwise attempt to determine the structure or sequence of the product.

## DATA IMAGES



### GTX114731 WB Image

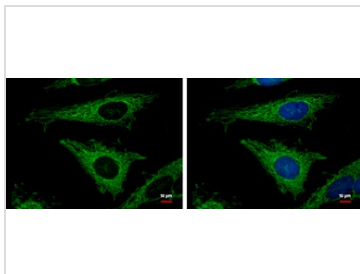
Whole cell extract (30 µg) was separated by 12% SDS-PAGE, and the membrane was blotted with MRPL12 antibody [N1C3] (GTX114731) diluted at 1:1000. The HRP-conjugated anti-rabbit IgG antibody (GTX213110-01) was used to detect the primary antibody.



### GTX114731 IHC-P Image

Immunohistochemical analysis of paraffin-embedded human breast cancer, using MRPL12(GTX114731) antibody at 1:250 dilution.

Antigen Retrieval: Trilogy™ (EDTA based, pH 8.0) buffer, 15min



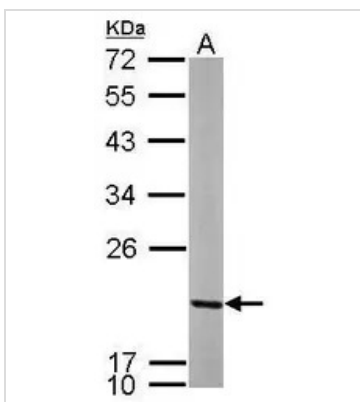
### GTX114731 ICC/IF Image

MRPL12 antibody [N1C3] detects MRPL12 protein at mitochondria by immunofluorescent analysis.

Sample: HeLa cells were fixed in 2% paraformaldehyde/culture medium at 37°C for 30 min.

Green: MRPL12 protein stained by MRPL12 antibody [N1C3] (GTX114731) diluted at 1:500.

Blue: Hoechst 33342 staining.



### GTX114731 WB Image

Sample (50 ug of whole cell lysate)

A: mouse brain

12% SDS PAGE

GTX114731 diluted at 1:1000



For full product information, images and publications, please visit our [website](https://www.genetex.com).