

SATB1 antibody [C2C3], C-term

Cat. No. GTX114738

Host	Rabbit
Clonality	Polyclonal
Isotype	IgG
Applications	WB, ICC/IF, IHC-P, IP, ChIP assay
Reactivity	Human, Mouse

References (1)

Package

100 µl, 25 µl

Applications

Application Note

*Optimal dilutions/concentrations should be determined by the researcher.

Suggested dilution	Recommended dilution
WB	1:500-1:10000
ICC/IF	Assay dependent
IHC-P	1:100-1:1000
IP	1:100-1:500
ChIP assay	Assay dependent

Not tested in other applications.

Calculated MW 86 kDa. ([Note](#))

Properties

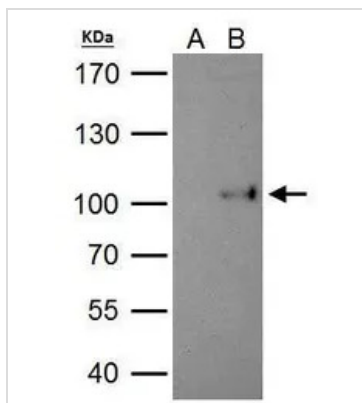
Form	Liquid
Buffer	PBS, 1% BSA, 20% Glycerol
Preservative	0.025% ProClin 300
Storage	Store as concentrated solution. Centrifuge briefly prior to opening vial. For short-term storage (1-2 weeks), store at 4°C. For long-term storage, aliquot and store at -20°C or below. Avoid multiple freeze-thaw cycles.
Concentration	0.36 mg/ml (Please refer to the vial label for the specific concentration.)
Immunogen	Recombinant protein encompassing a sequence within the C-terminus region of human SATB1. The exact sequence is proprietary.
Purification	Purified by antigen-affinity chromatography.
Conjugation	Unconjugated

For full product information, images and publications, please visit our [website](#).

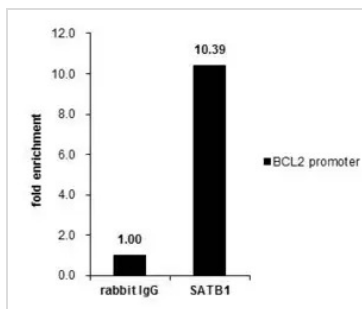
For laboratory research use only. Not for any clinical, therapeutic, or diagnostic use in humans or animals. Not for animal or human consumption.

Note

Purchasers shall not, and agree not to enable third parties to, analyze, copy, reverse engineer or otherwise attempt to determine the structure or sequence of the product.

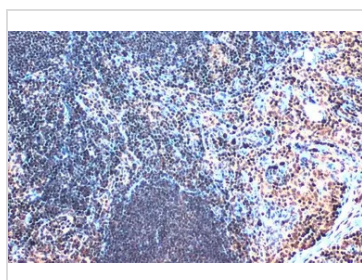
DATA IMAGES

GTX114738 IP Image

SATB1 antibody immunoprecipitates SATB1 protein in IP experiments. IP Sample: 293T whole cell lysate/extract A. Control with 2 µg of preimmune rabbit IgG B. Immunoprecipitation of SATB1 protein by 2 µg of SATB1 antibody (GTX114738) 7.5% SDS-PAGE The immunoprecipitated SATB1 protein was detected by SATB1 antibody (GTX114738) diluted at 1:1000. EasyBlot anti-rabbit IgG (GTX221666-01) was used as a secondary reagent.


GTX114738 ChIP assay Image

Cross-linked ChIP was performed with Jurkat chromatin extract and 5 µg of either control rabbit IgG or anti-SATB1 antibody. The precipitated DNA was detected by PCR with primer set targeting to BCL2 promoter.

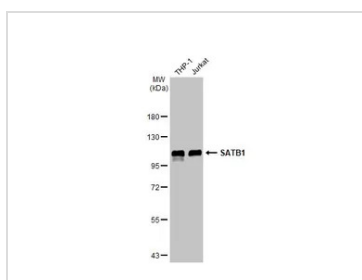
ChIP experiment and primer designs are based on [Nucleic Acids Res. 2011 Jun;39\(11\):4640-52](https://doi.org/10.1093/nar/39.11.4640).


GTX114738 IHC-P Image

SATB1 antibody [C2C3], C-term detects SATB1 protein at nucleus by immunohistochemical analysis. Sample: Paraffin-embedded mouse lymph node.

SATB1 stained by SATB1 antibody [C2C3], C-term (GTX114738) diluted at 1:500.

Antigen Retrieval: Citrate


GTX114738 WB Image

Various whole cell extracts (30 µg) were separated by 7.5% SDS-PAGE, and the membrane was blotted with SATB1 antibody [C2C3], C-term (GTX114738) diluted at 1:40000. The HRP-conjugated anti-rabbit IgG antibody (GTX213110-01) was used to detect the primary antibody.



For full product information, images and publications, please visit our [website](https://www.genetex.com).