

# HLTF antibody [N2C1], Internal

**Cat. No. GTX114776**

<b>Host</b>	Rabbit
<b>Clonality</b>	Polyclonal
<b>Isotype</b>	IgG
<b>Applications</b>	WB, ICC/IF, IHC-P, IP
<b>Reactivity</b>	Human

**Package**  
100 µl, 25 µl

## Applications

### Application Note

\*Optimal dilutions/concentrations should be determined by the researcher.

Suggested dilution	Recommended dilution
WB	1:1000-1:10000
ICC/IF	1:100-1:1000
IHC-P	1:100-1:1000
IP	1:100-1:500

Not tested in other applications.

**Calculated MW** 114 kDa. ([Note](#))

## Properties

<b>Form</b>	Liquid
<b>Buffer</b>	0.1M Tris, 0.1M Glycine, 20% Glycerol
<b>Preservative</b>	0.01% Thimerosal
<b>Storage</b>	Store as concentrated solution. Centrifuge briefly prior to opening vial. For short-term storage (1-2 weeks), store at 4°C. For long-term storage, aliquot and store at -20°C or below. Avoid multiple freeze-thaw cycles.
<b>Concentration</b>	0.62 mg/ml (Please refer to the vial label for the specific concentration.)
<b>Immunogen</b>	Recombinant protein encompassing a sequence within the center region of human HLTF. The exact sequence is proprietary.
<b>Purification</b>	Purified by antigen-affinity chromatography.
<b>Conjugation</b>	Unconjugated

### Note

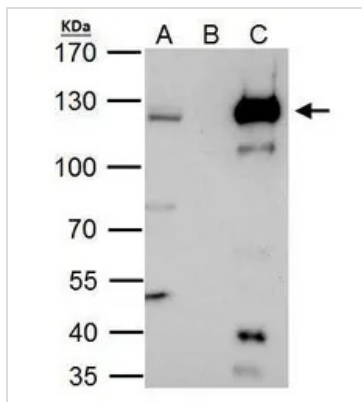
For laboratory research use only. Not for any clinical, therapeutic, or diagnostic use in humans or animals. Not for animal or human consumption.

Purchasers shall not, and agree not to enable third parties to, analyze, copy, reverse engineer or otherwise attempt to determine the structure or sequence of the product.



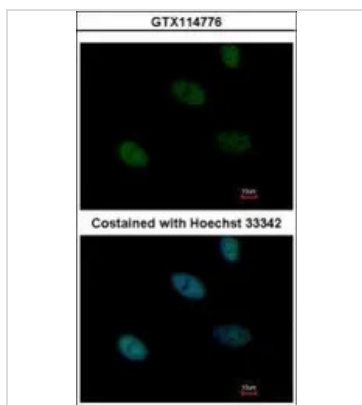
For full product information, images and publications, please visit our [website](#).

DATA IMAGES



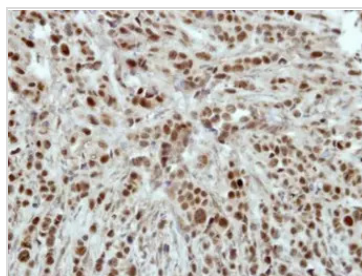
**GTx114776 IP Image**

HLTF antibody immunoprecipitates HLTf protein in IP experiments. IP Sample: HeLa whole cell lysate/extract A. 40 µg HeLa whole cell lysate/extract B. Control with 2 µg of preimmune rabbit IgG C. Immunoprecipitation of HLTf protein by 2 µg of HLTf antibody (GTx114776) 7.5% SDS-PAGE The immunoprecipitated HLTf protein was detected by HLTf antibody (GTx114776) diluted at 1:1000. EasyBlot anti-rabbit IgG (GTx221666-01) was used as a secondary reagent.



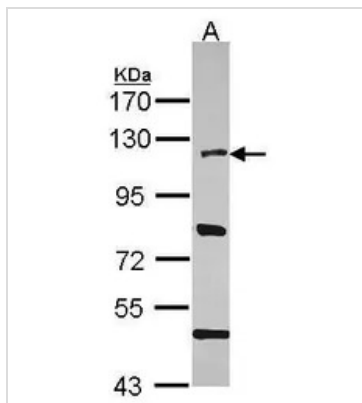
**GTx114776 ICC/IF Image**

Immunofluorescence analysis of paraformaldehyde-fixed HeLa, using HLTf(GTx114776) antibody at 1:500 dilution.



**GTx114776 IHC-P Image**

Immunohistochemical analysis of paraaffin-embedded MB157 xenograft, using HLTf(GTx114776) antibody at 1:500 dilution.  
Antigen Retrieval: Citrate buffer, pH 6.0, 15 min



**GTx114776 WB Image**

Sample (30 ug of whole cell lysate)  
A: HeLa  
7.5% SDS PAGE  
GTx114776 diluted at 1:5000



For full product information, images and publications, please visit our [website](https://www.genetex.com).