

## Munc18-1 antibody

Cat. No. GTX114809

Host	Rabbit
Clonality	Polyclonal
Isotype	IgG
Applications	WB, ICC/IF, IP
Reactivity	Human, Mouse, Rat

★★★★★ Review ( 2 )

Package  
100 µl, 25 µl

## Applications

## Application Note

\*Optimal dilutions/concentrations should be determined by the researcher.

Suggested dilution	Recommended dilution
WB	1:500-1:20000
ICC/IF	1:100-1:1000
IP	Assay dependent

Not tested in other applications.

Calculated MW	68 kDa. ( <a href="#">Note</a> )
Product Note	KO/KD validation is based on independent review by YCharOS.

## Properties

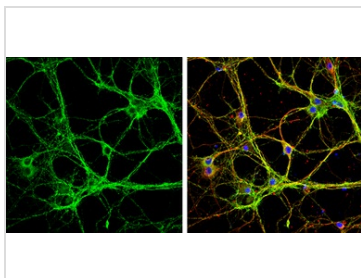
Form	Liquid
Buffer	0.1M Tris, 0.1M Glycine, 20% Glycerol
Preservative	0.01% Thimerosal
Storage	Store as concentrated solution. Centrifuge briefly prior to opening vial. For short-term storage (1-2 weeks), store at 4°C. For long-term storage, aliquot and store at -20°C or below. Avoid multiple freeze-thaw cycles.
Concentration	0.96 mg/ml (Please refer to the vial label for the specific concentration.)
Immunogen	Recombinant protein encompassing a sequence within the C-terminus region of human Munc18-1. The exact sequence is proprietary.
Purification	Purified by antigen-affinity chromatography.
Conjugation	Unconjugated

For full product information, images and publications, please visit our [website](#).

For laboratory research use only. Not for any clinical, therapeutic, or diagnostic use in humans or animals. Not for animal or human consumption.

**Note**

Purchasers shall not, and agree not to enable third parties to, analyze, copy, reverse engineer or otherwise attempt to determine the structure or sequence of the product.

**DATA IMAGES**

**GTx114809 ICC/IF Image**

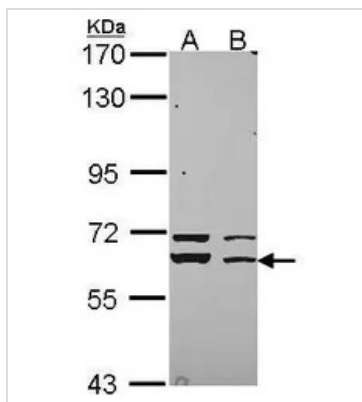
Munc18-1 antibody detects Munc18-1 protein by immunofluorescent analysis.

Sample: DIV9 rat E18 primary cortical neurons were fixed in 4% paraformaldehyde at RT for 15 min.

Green: Munc18-1 protein stained by Munc18-1 antibody (GTx114809) diluted at 1:500.

Red: beta Tubulin 3/ Tuj1, stained by beta Tubulin 3/ Tuj1 antibody [GT886] (GTx631830) diluted at 1:500.

Blue: Fluoroshield with DAPI (GTx30920).


**GTx114809 WB Image**

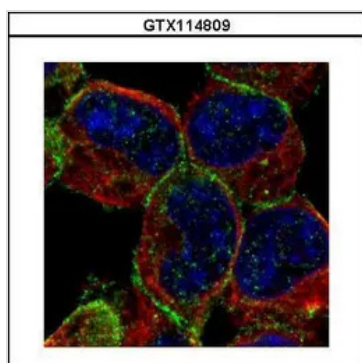
Sample (30 ug of whole cell lysate)

A: 293T

B: A431 (GTx27909)

7.5% SDS PAGE

GTx114809 diluted at 1:3000


**GTx114809 ICC/IF Image**

Confocal immunofluorescence analysis (Olympus FV10i) of methanol-fixed A431, using

STXBP1(GTx114809) antibody (Green) at 1:500 dilution. Alpha-tubulin filaments were labeled with

GTx11304 (Red) at 1:2000.



For full product information, images and publications, please visit our [website](https://www.genetex.com).