

## Munc18-1 antibody

Cat. No. GTX114809

<b>Host</b>	Rabbit
<b>Clonality</b>	Polyclonal
<b>Isotype</b>	IgG
<b>Applications</b>	WB, ICC/IF, IP
<b>Reactivity</b>	Human, Mouse, Rat

References ( 1 )

★★★★★ Review ( 2 )

Package

100 µl, 25 µl

## Applications

## Application Note

\*Optimal dilutions/concentrations should be determined by the researcher.

Suggested dilution	Recommended dilution
WB	1:500-1:20000
ICC/IF	1:100-1:1000
IP	Assay dependent

Not tested in other applications.

**Calculated MW** 68 kDa. ( [Note](#) )**Product Note** KO/KD validation is based on independent review by YCharOS.

## Properties

<b>Form</b>	Liquid
<b>Buffer</b>	0.1M Tris, 0.1M Glycine, 20% Glycerol
<b>Preservative</b>	0.01% Thimerosal
<b>Storage</b>	Store as concentrated solution. Centrifuge briefly prior to opening vial. For short-term storage (1-2 weeks), store at 4°C. For long-term storage, aliquot and store at -20°C or below. Avoid multiple freeze-thaw cycles.
<b>Concentration</b>	0.96 mg/ml (Please refer to the vial label for the specific concentration.)
<b>Immunogen</b>	Recombinant protein encompassing a sequence within the C-terminus region of human Munc18-1. The exact sequence is proprietary.
<b>Purification</b>	Purified by antigen-affinity chromatography.
<b>Conjugation</b>	Unconjugated



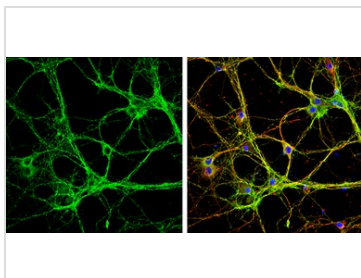
For full product information, images and publications, please visit our [website](#).

For laboratory research use only. Not for any clinical, therapeutic, or diagnostic use in humans or animals. Not for animal or human consumption.

**Note**

Purchasers shall not, and agree not to enable third parties to, analyze, copy, reverse engineer or otherwise attempt to determine the structure or sequence of the product.

## DATA IMAGES

**GTX114809 ICC/IF Image**

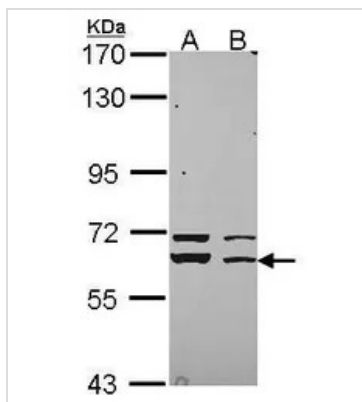
Munc18-1 antibody detects Munc18-1 protein by immunofluorescent analysis.

Sample: DIV9 rat E18 primary cortical neurons were fixed in 4% paraformaldehyde at RT for 15 min.

Green: Munc18-1 protein stained by Munc18-1 antibody (GTX114809) diluted at 1:500.

Red: beta Tubulin 3/ Tuj1, stained by beta Tubulin 3/ Tuj1 antibody [GT886] (GTX631830) diluted at 1:500.

Blue: Fluoroshield with DAPI (GTX30920).

**GTX114809 WB Image**

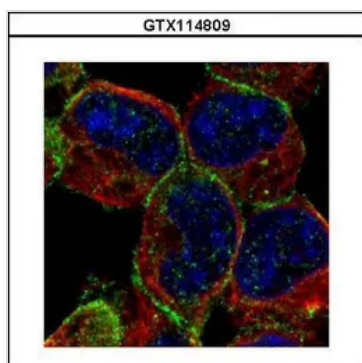
Sample (30 ug of whole cell lysate)

A: 293T

B: A431 (GTX27909)

7.5% SDS PAGE

GTX114809 diluted at 1:3000

**GTX114809 ICC/IF Image**

Confocal immunofluorescence analysis (Olympus FV10i) of methanol-fixed A431, using

STXBP1(GTX114809) antibody (Green) at 1:500 dilution. Alpha-tubulin filaments were labeled with

GTX11304 (Red) at 1:2000.



For full product information, images and publications, please visit our [website](#).