

## Calcitonin antibody [13B9]

**Cat. No. GTX11484**

<b>Host</b>	Mouse
<b>Clonality</b>	Monoclonal
<b>Isotype</b>	IgG2a
<b>Applications</b>	WB, ELISA, Sandwich ELISA
<b>Reactivity</b>	Human

**Package**  
100 µg

## Applications

**Application Note**

\*Optimal dilutions/concentrations should be determined by the researcher.

Suggested dilution	Recommended dilution
WB	Assay dependent
ELISA	Assay dependent
Sandwich ELISA	Assay dependent

**Note : Capture : GTX11497, Detection : GTX11484**

Not tested in other applications.

**Product Note** Epitope specificity : a.a.r. 60-69

## Properties

<b>Form</b>	Liquid
<b>Buffer</b>	PBS
<b>Preservative</b>	0.09% Sodium azide
<b>Storage</b>	Store as concentrated solution. Centrifuge briefly prior to opening vial. Store at 4°C.
<b>Concentration</b>	Batch dependent (Please refer to the vial label for the specific concentration.)
<b>Immunogen</b>	Calcitonin conjugated with carrier protein.
<b>Purification</b>	Protein A purified
<b>Conjugation</b>	Unconjugated

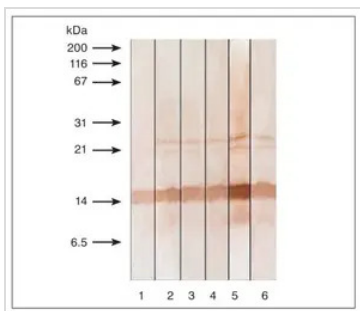
**Note**

For laboratory research use only. Not for any clinical, therapeutic, or diagnostic use in humans or animals. Not for animal or human consumption.

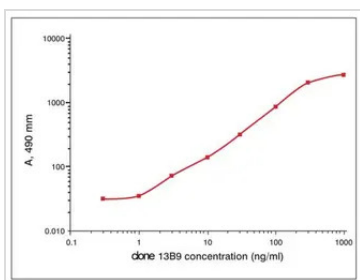
Purchasers shall not, and agree not to enable third parties to, analyze, copy, reverse engineer or otherwise attempt to determine the structure or sequence of the product.



For full product information, images and publications, please visit our [website](#).

**DATA IMAGES**

**GTX11484 WB Image**

Detection of human recombinant PCT in Western blotting by monoclonal antibodies specific to calcitonin following 15% SDS-PAGE in reducing conditions. Antigen loaded - 100 ng/lane; Lane 1: Calcitonin antibody [13B9] (GTX11484); Lane 2: Calcitonin antibody [13F2] (GTX14818); Lane 3: Calcitonin antibody [13G11] (GTX14819); Lane 4: Calcitonin antibody [14A2] (GTX11496); Lane 5: Calcitonin antibody [16B5] (GTX11493); Lane 6: Calcitonin antibody [24B2] (GTX11497)


**GTX11484 ELISA Image**

Titration curve of Calcitonin antibody [13B9] (GTX11484) in indirect ELISA. Antigen: Calcitonin human recombinant - 0.02 ug/well



For full product information, images and publications, please visit our [website](#).