

## Tropomyosin 4 antibody

Cat. No. GTX114851

Host	Rabbit
Clonality	Polyclonal
Isotype	IgG
Applications	WB, IHC-P, IHC-Wm
Reactivity	Human, Mouse, Rat, Zebrafish

References ( 2 )

Package

100 µl, 25 µl

## Applications

## Application Note

\*Optimal dilutions/concentrations should be determined by the researcher.

Suggested dilution	Recommended dilution
WB	1:500-1:3000
IHC-P	1:100-1:1000
IHC-Wm	Assay dependent

Not tested in other applications.

Calculated MW 29 kDa. ( [Note](#) )

## Properties

Form	Liquid
Buffer	0.1M Tris, 0.1M Glycine, 20% Glycerol
Preservative	0.01% Thimerosal
Storage	Store as concentrated solution. Centrifuge briefly prior to opening vial. For short-term storage (1-2 weeks), store at 4°C. For long-term storage, aliquot and store at -20°C or below. Avoid multiple freeze-thaw cycles.
Concentration	0.33 mg/ml (Please refer to the vial label for the specific concentration.)
Immunogen	Recombinant protein encompassing a sequence within the center region of human Tropomyosin 4. The exact sequence is proprietary.
Purification	Purified by antigen-affinity chromatography.
Conjugation	Unconjugated

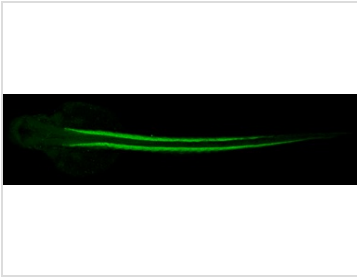
## Note

For laboratory research use only. Not for any clinical, therapeutic, or diagnostic use in humans or animals. Not for animal or human consumption.

Purchasers shall not, and agree not to enable third parties to, analyze, copy, reverse engineer or otherwise attempt to determine the structure or sequence of the product.



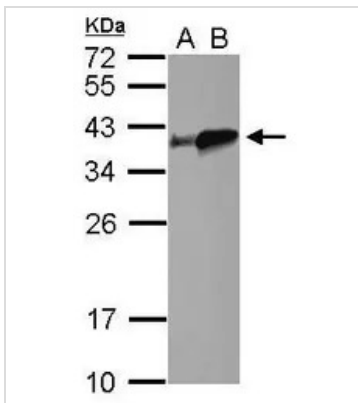
For full product information, images and publications, please visit our [website](#).

**DATA IMAGES**

**GTX114851 IHC-Wm Image**

Tropomyosin 4 antibody detects Tropomyosin 4 protein on zebrafish by whole mount immunohistochemical analysis.

Sample: 2 days-post-fertilization zebrafish embryo.

Tropomyosin 4 antibody (GTX114851) dilution: 1:100.


**GTX114851 WB Image**

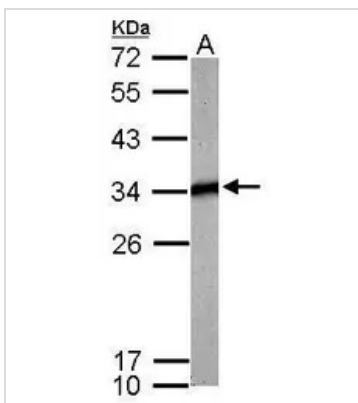
Sample (30 µg of whole cell lysate)

A: zebrafish heart

B: zebrafish muscle

12% SDS PAGE

GTX114851 diluted at 1:500

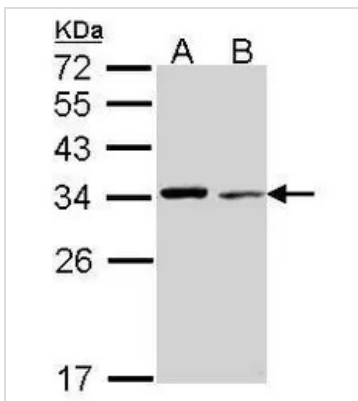

**GTX114851 WB Image**

Sample (50 ug of whole cell lysate)

A: mouse brain

12% SDS PAGE

GTX114851 diluted at 1:1000


**GTX114851 WB Image**

Sample (30 ug of whole cell lysate)

A: NT2D1

B: HeLa

12% SDS PAGE

GTX114851 diluted at 1:1000



For full product information, images and publications, please visit our [website](http://www.genetex.com).