

UBE2L3 antibody [N1C3]

Cat. No. GTX114870

Host	Rabbit
Clonality	Polyclonal
Isotype	IgG
Application	WB, ICC/IF, IHC-P
Reactivity	Human, Mouse, Zebrafish

Package
100 µl, 25 µl

APPLICATION

Application Note

*Optimal dilutions/concentrations should be determined by the researcher.

Suggested dilution	Recommended dilution
WB	1:500-1:3000
ICC/IF	1:100-1:1000
IHC-P	Assay dependent

Not tested in other applications.

Calculated MW 18 kDa. ([Note](#))

PROPERTIES

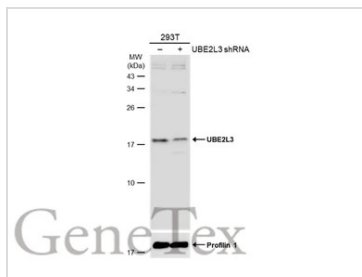
Form	Liquid
Buffer	0.1M Tris, 0.1M Glycine, 20% Glycerol
Preservative	0.01% Thimerosal
Storage	Store as concentrated solution. Centrifuge briefly prior to opening vial. For short-term storage (1-2 weeks), store at 4°C. For long-term storage, aliquot and store at -20°C or below. Avoid multiple freeze-thaw cycles.
Concentration	0.78 mg/ml (Please refer to the vial label for the specific concentration.)
Immunogen	Recombinant protein encompassing a sequence within the center region of human UBE2L3. The exact sequence is proprietary.
Purification	Purified by antigen-affinity chromatography.
Conjugation	Unconjugated

Note For laboratory research use only. Not for any clinical, therapeutic, or diagnostic use in humans or animals. Not for animal or human consumption.

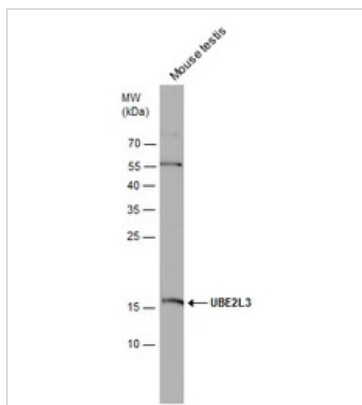
Purchasers shall not, and agree not to enable third parties to, analyze, copy, reverse engineer or otherwise attempt to determine the structure or sequence of the product.



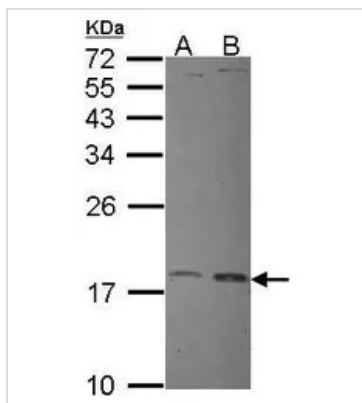
For full product information, images and publications, please visit our [website](#).

DATA IMAGES

GTX114870 WB Image

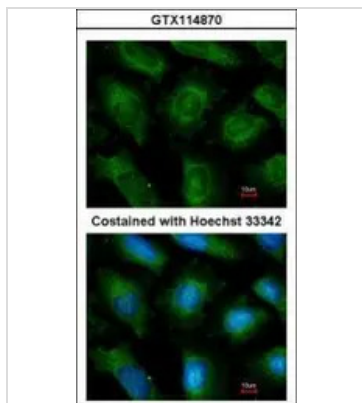
Non-transfected (-) and transfected (+) 293T whole cell extracts (30 µg) were separated by 15% SDS-PAGE, and the membrane was blotted with UBE2L3 antibody [N1C3] (GTX114870) diluted at 1:1000. The HRP-conjugated anti-rabbit IgG antibody (GTX213110-01) was used to detect the primary antibody.


GTX114870 WB Image

Mouse tissue extract (50 µg) was separated by 15% SDS-PAGE, and the membrane was blotted with UBE2L3 antibody [N1C3] (GTX114870) diluted at 1:1000.


GTX114870 WB Image

Sample (30 ug of whole cell lysate)
A: JurKat
B: HeLa
12% SDS PAGE
GTX114870 diluted at 1:1000


GTX114870 ICC/IF Image

Immunofluorescence analysis of methanol-fixed HeLa, using UBE2L3(GTX114870) antibody at 1:200 dilution.



For full product information, images and publications, please visit our [website](https://www.genetex.com).