

RPL6 antibody

Cat. No. GTX114913

Host	Rabbit
Clonality	Polyclonal
Isotype	IgG
Applications	WB, ICC/IF, IHC-P, IHC-Fr
Reactivity	Human, Mouse, Rat

References (1)

Package

100 µl, 25 µl

Applications

Application Note

*Optimal dilutions/concentrations should be determined by the researcher.

Suggested dilution	Recommended dilution
WB	1:500-1:3000
ICC/IF	1:100-1:1000
IHC-P	1:100-1:1000
IHC-Fr	Assay dependent

Not tested in other applications.

Calculated MW 33 kDa. ([Note](#))

Properties

Form	Liquid
Buffer	PBS, 1% BSA, 20% Glycerol
Preservative	0.01% Thimerosal
Storage	Store as concentrated solution. Centrifuge briefly prior to opening vial. For short-term storage (1-2 weeks), store at 4°C. For long-term storage, aliquot and store at -20°C or below. Avoid multiple freeze-thaw cycles.
Concentration	1 mg/ml (Please refer to the vial label for the specific concentration.)
Immunogen	Recombinant protein encompassing a sequence within the center region of human RPL6. The exact sequence is proprietary.
Purification	Purified by antigen-affinity chromatography.
Conjugation	Unconjugated

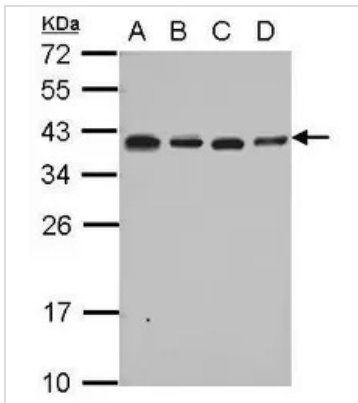
Note

For laboratory research use only. Not for any clinical, therapeutic, or diagnostic use in humans or animals. Not for animal or human consumption.

Purchasers shall not, and agree not to enable third parties to, analyze, copy, reverse engineer or otherwise attempt to determine the structure or sequence of the product.



For full product information, images and publications, please visit our [website](#).

DATA IMAGES

GTK114913 WB Image

Sample (30 ug of whole cell lysate)

A: A549

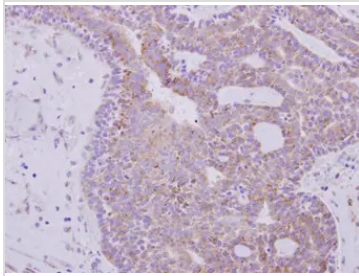
B: H1299

C: HCT116

D: MCF-7

12% SDS PAGE

GTK114913 diluted at 1:1000

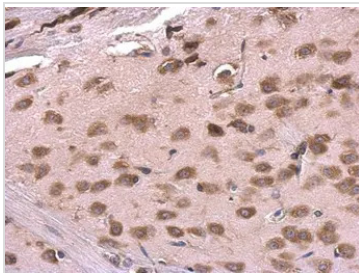

GTK114913 IHC-P Image

RPL6 antibody detects RPL6 protein at cytoplasm on human lung carcinoma by immunohistochemical analysis.

Sample: Paraffin-embedded lung carcinoma.

RPL6 antibody (GTK114913) dilution: 1:500.

Antigen Retrieval: Trilogy™ (EDTA based, pH 8.0) buffer, 15min

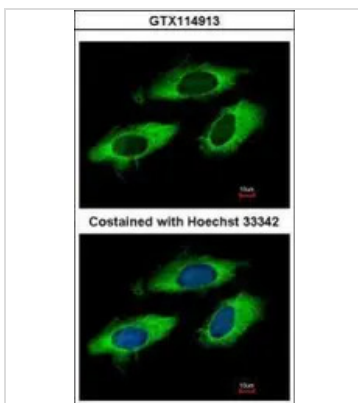

GTK114913 IHC-P Image

RPL6 antibody detects RPL6 protein at cytosol on rat fore brain by immunohistochemical analysis.

Sample: Paraffin-embedded rat fore brain.

RPL6 antibody (GTK114913) dilution: 1:500.

Antigen Retrieval: Trilogy™ (EDTA based, pH 8.0) buffer, 15min


GTK114913 ICC/IF Image

Immunofluorescence analysis of methanol-fixed HeLa, using RPL6(GTK114913) antibody at 1:500 dilution.



For full product information, images and publications, please visit our [website](http://www.genetex.com).