

Occludin antibody

Cat. No. GTX114949

Host	Rabbit
Clonality	Polyclonal
Isotype	IgG
Applications	WB, ICC/IF, IHC-P, IHC-Fr
Reactivity	Human, Mouse, Rat, Monkey

References (21)

★★★★★ Review (2)

Package

100 µl, 25 µl

Applications

Application Note

*Optimal dilutions/concentrations should be determined by the researcher.

Suggested dilution	Recommended dilution
WB	1:500-1:3000
ICC/IF	Assay dependent
IHC-P	1:100-1:1000
IHC-Fr	1:100-1:1000

Not tested in other applications.

Calculated MW 59 kDa. ([Note](#))

Product Note This antibody may not be suitable for mouse WB assay, as its mouse reactivity is based on IHC-P testing.

Properties

Form	Liquid
Buffer	PBS, 20% Glycerol
Preservative	0.025% ProClin 300
Storage	Store as concentrated solution. Centrifuge briefly prior to opening vial. For short-term storage (1-2 weeks), store at 4°C. For long-term storage, aliquot and store at -20°C or below. Avoid multiple freeze-thaw cycles.
Concentration	0.94 mg/ml (Please refer to the vial label for the specific concentration.)
Immunogen	Recombinant protein encompassing a sequence within the center region of human Occludin. The exact sequence is proprietary.
Purification	Purified by antigen-affinity chromatography.
Conjugation	Unconjugated



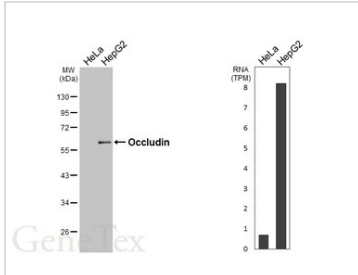
For full product information, images and publications, please visit our [website](#).

Date 2025 / 08 / 01 Page 1 of 2

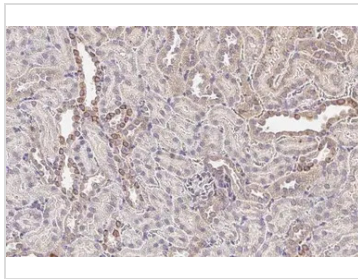
For laboratory research use only. Not for any clinical, therapeutic, or diagnostic use in humans or animals. Not for animal or human consumption.

Note

Purchasers shall not, and agree not to enable third parties to, analyze, copy, reverse engineer or otherwise attempt to determine the structure or sequence of the product.

DATA IMAGES

GTx114949 WB Image

Various whole cell extracts (30 µg) were separated by 10% SDS-PAGE, and the membrane was blotted with Occludin antibody (GTx114949) diluted at 1:1000. The HRP-conjugated anti-rabbit IgG antibody (GTx213110-01) was used to detect the primary antibody. Corresponding RNA expression data for the same cell lines are based on Human Protein Atlas program.

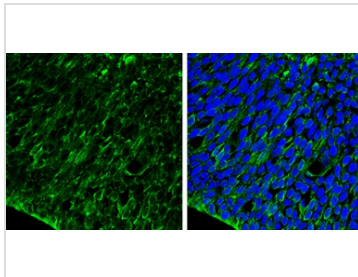

GTx114949 IHC-P Image

Occludin antibody detects Occludin protein at cell membrane by immunohistochemical analysis.

Sample: Paraffin-embedded rat kidney.

Occludin stained by Occludin antibody (GTx114949) diluted at 1:500.

Antigen Retrieval: Citrate buffer, pH 6.0, 15 min

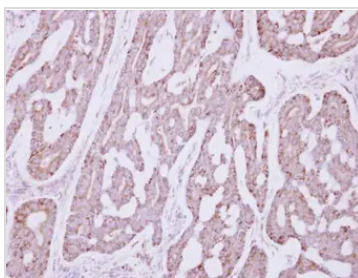

GTx114949 IHC-Fr Image

Occludin antibody detects Occludin protein expression by immunohistochemical analysis.

Sample: Frozen sectioned E13.5 Rat brain.

Green: Occludin protein stained by Occludin antibody (GTx114949) diluted at 1:250.

Blue: Fluoroshield with DAPI (GTx30920).


GTx114949 IHC-P Image

Immunohistochemical analysis of paraffin-embedded human breast cancer, using Occludin(GTx114949) antibody at 1:250 dilution.

Antigen Retrieval: Trilogy™ (EDTA based, pH 8.0) buffer, 15min



For full product information, images and publications, please visit our [website](https://www.genetex.com).