

## Occludin antibody

Cat. No. GTX114949

Host	Rabbit
Clonality	Polyclonal
Isotype	IgG
Applications	WB, ICC/IF, IHC-P, IHC-Fr
Reactivity	Human, Mouse, Rat, Monkey

References ( 21 )

★★★★★ Review ( 2 )

Package

100 µl, 25 µl

## Applications

## Application Note

\*Optimal dilutions/concentrations should be determined by the researcher.

Suggested dilution	Recommended dilution
WB	1:500-1:3000
ICC/IF	Assay dependent
IHC-P	1:100-1:1000
IHC-Fr	1:100-1:1000

Not tested in other applications.

Calculated MW	59 kDa. ( <a href="#">Note</a> )
Product Note	This antibody may not be suitable for mouse WB assay, as its mouse reactivity is based on IHC-P testing.

## Properties

Form	Liquid
Buffer	PBS, 20% Glycerol
Preservative	0.025% ProClin 300
Storage	Store as concentrated solution. Centrifuge briefly prior to opening vial. For short-term storage (1-2 weeks), store at 4°C. For long-term storage, aliquot and store at -20°C or below. Avoid multiple freeze-thaw cycles.
Concentration	0.94 mg/ml (Please refer to the vial label for the specific concentration.)
Immunogen	Recombinant protein encompassing a sequence within the center region of human Occludin. The exact sequence is proprietary.
Purification	Purified by antigen-affinity chromatography.
Conjugation	Unconjugated

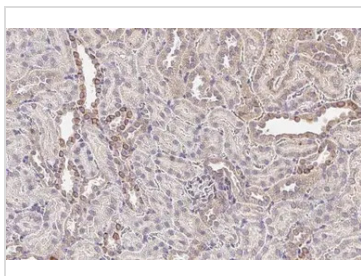


For full product information, images and publications, please visit our [website](#).

For laboratory research use only. Not for any clinical, therapeutic, or diagnostic use in humans or animals. Not for animal or human consumption.

**Note**

Purchasers shall not, and agree not to enable third parties to, analyze, copy, reverse engineer or otherwise attempt to determine the structure or sequence of the product.

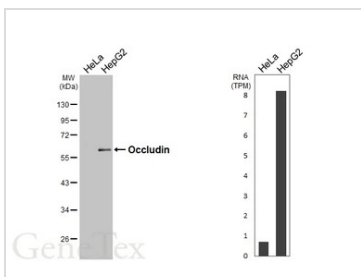
**DATA IMAGES**

**GTx114949 IHC-P Image**

Occludin antibody detects Occludin protein at cell membrane by immunohistochemical analysis.

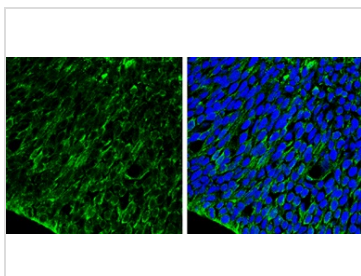
Sample: Paraffin-embedded rat kidney.

Occludin stained by Occludin antibody (GTx114949) diluted at 1:500.

Antigen Retrieval: Citrate buffer, pH 6.0, 15 min


**GTx114949 WB Image**

Various whole cell extracts (30 µg) were separated by 10% SDS-PAGE, and the membrane was blotted with Occludin antibody (GTx114949) diluted at 1:1000. The HRP-conjugated anti-rabbit IgG antibody (GTx213110-01) was used to detect the primary antibody. Corresponding RNA expression data for the same cell lines are based on Human Protein Atlas program.

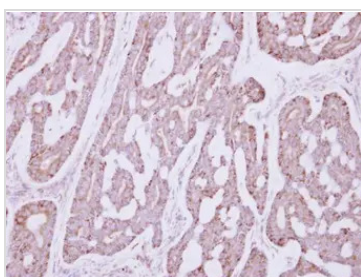

**GTx114949 IHC-Fr Image**

Occludin antibody detects Occludin protein expression by immunohistochemical analysis.

Sample: Frozen sectioned E13.5 Rat brain.

Green: Occludin protein stained by Occludin antibody (GTx114949) diluted at 1:250.

Blue: Fluoroshield with DAPI (GTx30920).


**GTx114949 IHC-P Image**

Immunohistochemical analysis of paraffin-embedded human breast cancer, using Occludin (GTx114949) antibody at 1:250 dilution.

Antigen Retrieval: Trilogy™ (EDTA based, pH 8.0) buffer, 15min



For full product information, images and publications, please visit our [website](https://www.genetex.com).