

PEX19 antibody

Cat. No. GTX114959

Host	Rabbit
Clonality	Polyclonal
Isotype	IgG
Application	WB, ICC/IF, IHC-P
Reactivity	Human, Mouse

Package
100 µl, 25 µl

APPLICATION

Application Note

*Optimal dilutions/concentrations should be determined by the researcher.

Suggested dilution	Recommended dilution
WB	1:500-1:3000
ICC/IF	1:100-1:1000
IHC-P	1:100-1:1000

Not tested in other applications.

Calculated MW 33 kDa. ([Note](#))

PROPERTIES

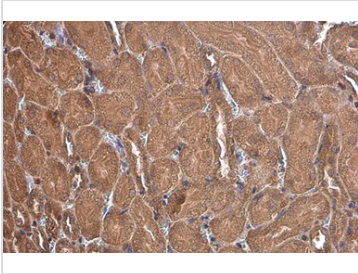
Form	Liquid
Buffer	PBS, 20% Glycerol
Preservative	0.01% Thimerosal
Storage	Store as concentrated solution. Centrifuge briefly prior to opening vial. For short-term storage (1-2 weeks), store at 4°C. For long-term storage, aliquot and store at -20°C or below. Avoid multiple freeze-thaw cycles.
Concentration	1 mg/ml (Please refer to the vial label for the specific concentration.)
Immunogen	Recombinant protein encompassing a sequence within the center region of human PEX19. The exact sequence is proprietary.
Purification	Purified by antigen-affinity chromatography.
Conjugation	Unconjugated

Note For laboratory research use only. Not for any clinical, therapeutic, or diagnostic use in humans or animals. Not for animal or human consumption.

Purchasers shall not, and agree not to enable third parties to, analyze, copy, reverse engineer or otherwise attempt to determine the structure or sequence of the product.



For full product information, images and publications, please visit our [website](#).

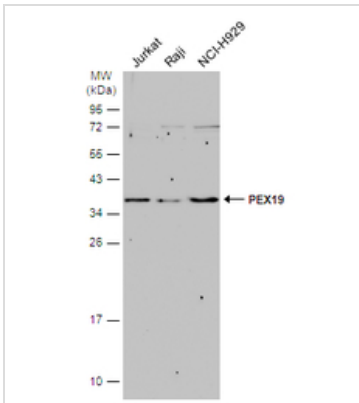
DATA IMAGES

GTx114959 IHC-P Image

PEX19 antibody detects PEX19 protein at cytoplasm by immunohistochemical analysis.

Sample: Paraffin-embedded mouse kidney.

PEX19 stained by PEX19 antibody (GTx114959) diluted at 1:500.

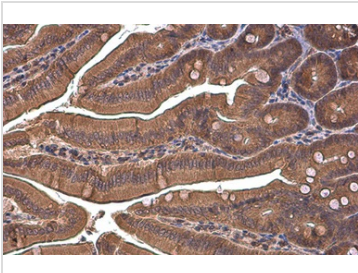
Antigen Retrieval: Citrate buffer, pH 6.0, 15 min


GTx114959 WB Image

Various whole cell extracts (30 µg) were separated by 12% SDS-PAGE, and the membrane was blotted with

PEX19 antibody (GTx114959) diluted at 1:1000. The HRP-conjugated anti-rabbit IgG antibody

(GTx213110-01) was used to detect the primary antibody.

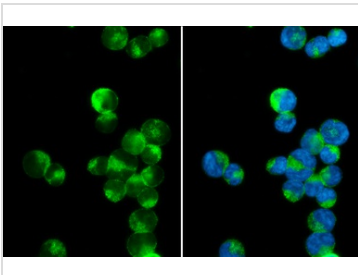

GTx114959 IHC-P Image

PEX19 antibody detects PEX19 protein at cytoplasm by immunohistochemical analysis.

Sample: Paraffin-embedded mouse intestine.

PEX19 stained by PEX19 antibody (GTx114959) diluted at 1:500.

Antigen Retrieval: Citrate buffer, pH 6.0, 15 min


GTx114959 ICC/IF Image

PEX19 antibody detects PEX19 protein at cytoplasm by immunofluorescent analysis.

Sample: Jurkat cells were fixed in 4% paraformaldehyde at RT for 15 min.

Green: PEX19 stained by PEX19 antibody (GTx114959) diluted at 1:500.

Blue: Fluoroshield with DAPI (GTx30920).



For full product information, images and publications, please visit our [website](#).