

Calcitonin antibody [14A2]

Cat. No. GTX11496

Host	Mouse
Clonality	Monoclonal
Isotype	IgG1
Application	WB, ELISA
Reactivity	Human

Package
100 µg

APPLICATION

Application Note

*Optimal dilutions/concentrations should be determined by the researcher.

Suggested dilution	Recommended dilution
WB	Assay dependent
ELISA	Assay dependent

Not tested in other applications.

Product Note Epitope specificity : a.a.r. 72-81

PROPERTIES

Form	Liquid
Buffer	PBS
Preservative	0.09% Sodium azide
Storage	Store as concentrated solution. Centrifuge briefly prior to opening vial. Store at 4°C.
Concentration	Batch dependent (Please refer to the vial label for the specific concentration.)
Immunogen	Calcitonin conjugated with carrier protein.
Purification	Protein A purified
Conjugation	Unconjugated

Note

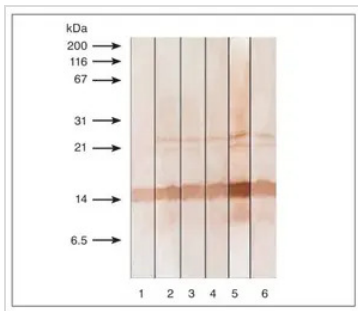
For laboratory research use only. Not for any clinical, therapeutic, or diagnostic use in humans or animals. Not for animal or human consumption.

Purchasers shall not, and agree not to enable third parties to, analyze, copy, reverse engineer or otherwise attempt to determine the structure or sequence of the product.



For full product information, images and publications, please visit our [website](#).

DATA IMAGES



GTX11496 WB Image

Detection of human recombinant PCT in Western blotting by monoclonal antibodies specific to calcitonin following 15% SDS-PAGE in reducing conditions. Antigen loaded - 100 ng/lane; Lane 1: Calcitonin antibody [13B9] (GTX11484); Lane 2: Calcitonin antibody [13F2] (GTX14818); Lane 3: Calcitonin antibody [13G11] (GTX14819); Lane 4: Calcitonin antibody [14A2] (GTX11496); Lane 5: Calcitonin antibody [16B5] (GTX11493); Lane 6: Calcitonin antibody [24B2] (GTX11497)



For full product information, images and publications, please visit our [website](https://www.genetex.com).

Date 2024 / 05 / 20 Page 2 of 2