

ERF antibody

Cat. No. GTX114971

Host	Rabbit
Clonality	Polyclonal
Isotype	IgG
Applications	WB, ICC/IF, IHC-P
Reactivity	Human, Mouse

Package
100 µl, 25 µl

Applications

Application Note

*Optimal dilutions/concentrations should be determined by the researcher.

Suggested dilution	Recommended dilution
WB	1:500-1:10000
ICC/IF	1:100-1:1000
IHC-P	1:100-1:1000

Not tested in other applications.

Calculated MW 59 kDa. ([Note](#))

Properties

Form	Liquid
Buffer	PBS, 1% BSA, 20% Glycerol
Preservative	0.025% ProClin 300
Storage	Store as concentrated solution. Centrifuge briefly prior to opening vial. For short-term storage (1-2 weeks), store at 4°C. For long-term storage, aliquot and store at -20°C or below. Avoid multiple freeze-thaw cycles.
Concentration	0.24 mg/ml (Please refer to the vial label for the specific concentration.)
Immunogen	Recombinant protein encompassing a sequence within the center region of human ERF. The exact sequence is proprietary.
Purification	Purified by antigen-affinity chromatography.
Conjugation	Unconjugated

Note

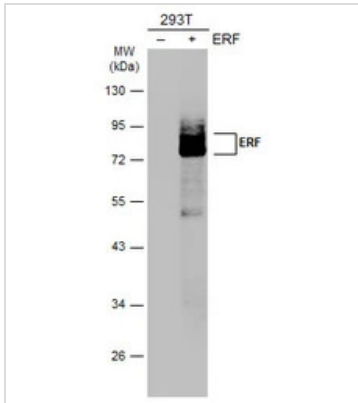
For laboratory research use only. Not for any clinical, therapeutic, or diagnostic use in humans or animals. Not for animal or human consumption.

Purchasers shall not, and agree not to enable third parties to, analyze, copy, reverse engineer or otherwise attempt to determine the structure or sequence of the product.



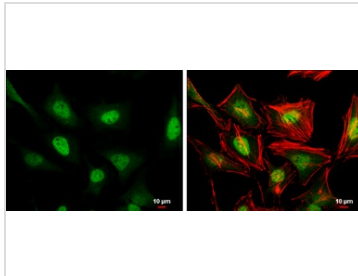
For full product information, images and publications, please visit our [website](#).

DATA IMAGES



GTx114971 WB Image

Non-transfected (-) and transfected (+) 293T whole cell extracts (30 µg) were separated by 10% SDS-PAGE, and the membrane was blotted with ERF antibody (GTx114971) diluted at 1:4000. The HRP-conjugated anti-rabbit IgG antibody (GTx213110-01) was used to detect the primary antibody.



GTx114971 ICC/IF Image

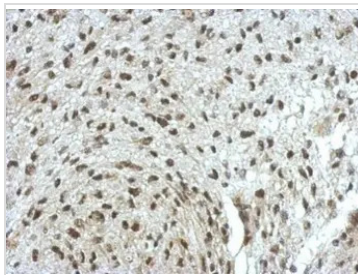
ERF antibody detects ERF protein at nucleus by immunofluorescent analysis.

Sample: HeLa cells were fixed in 4% paraformaldehyde at RT for 15 min.

Green: ERF stained by ERF antibody (GTx114971) diluted at 1:500.

Red: phalloidin, a cytoskeleton marker, diluted at 1:100.

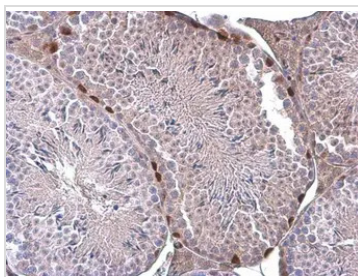
Scale bar= 10µm.



GTx114971 IHC-P Image

Immunohistochemical analysis of paraffin-embedded U373 xenograft, using ERF(GTx114971) antibody at 1:500 dilution.

Antigen Retrieval: Trilogy™ (EDTA based, pH 8.0) buffer, 15min



GTx114971 IHC-P Image

ERF antibody detects ERF protein at nucleus by immunohistochemical analysis.

Sample: Paraffin-embedded mouse testis.

ERF stained by ERF antibody (GTx114971) diluted at 1:500.

Antigen Retrieval: Citrate buffer, pH 6.0, 15 min



For full product information, images and publications, please visit our [website](https://www.genetex.com).