

Visinin-like 1 antibody

Cat. No. GTX115039

Host	Rabbit
Clonality	Polyclonal
Isotype	IgG
Applications	WB, IHC-P, IHC-Fr
Reactivity	Human, Mouse, Rat, Rabbit

References (3)

Package

100 µl, 25 µl

Applications

Application Note

*Optimal dilutions/concentrations should be determined by the researcher.

Suggested dilution	Recommended dilution
WB	1:500-1:100000
IHC-P	Assay dependent
IHC-Fr	1:100-1:1000

Not tested in other applications.

Calculated MW 22 kDa. ([Note](#))

Properties

Form	Liquid
Buffer	0.1M Tris, 0.1M Glycine, 20% Glycerol
Preservative	0.01% Thimerosal
Storage	Store as concentrated solution. Centrifuge briefly prior to opening vial. For short-term storage (1-2 weeks), store at 4°C. For long-term storage, aliquot and store at -20°C or below. Avoid multiple freeze-thaw cycles.
Concentration	1 mg/ml (Please refer to the vial label for the specific concentration.)
Immunogen	Recombinant protein encompassing a sequence within the center region of human Visinin-like 1. The exact sequence is proprietary.
Purification	Purified by antigen-affinity chromatography.
Conjugation	Unconjugated

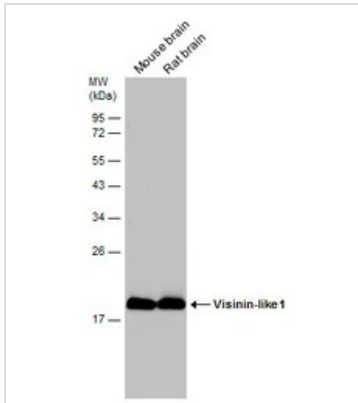
Note

For laboratory research use only. Not for any clinical, therapeutic, or diagnostic use in humans or animals. Not for animal or human consumption.

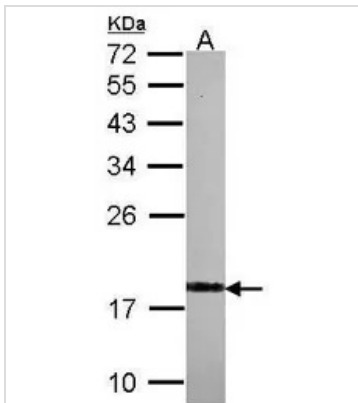
Purchasers shall not, and agree not to enable third parties to, analyze, copy, reverse engineer or otherwise attempt to determine the structure or sequence of the product.



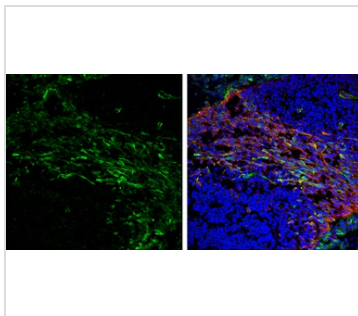
For full product information, images and publications, please visit our [website](#).

DATA IMAGES

GTx115039 WB Image

Various tissue extracts (50 µg) were separated by 12% SDS-PAGE, and the membrane was blotted with Visinin-like 1 antibody (GTx115039) diluted at 1:100000.


GTx115039 WB Image

Sample (30 ug of whole cell lysate)
A: IMR32
12% SDS PAGE
GTx115039 diluted at 1:1000


GTx115039 IHC-Fr Image

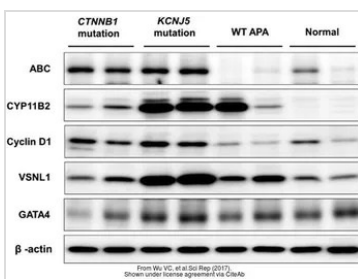
Visinin-like 1 antibody detects Visinin-like 1 protein expression by immunohistochemical analysis.

Sample: Frozen sectioned E13.5 Rat brain.

Green: Visinin-like 1 protein stained by Visinin-like 1 antibody (GTx115039) diluted at 1:250.

Red: beta Tubulin 3/ TUJ1, a mature neuron marker, stained by beta Tubulin 3/ TUJ1 antibody [GT11710] (GTx631836) diluted at 1:500.

Blue: Fluoroshield with DAPI (GTx30920).


GTx115039 WB Image

The data was published in the journal Sci Rep in 2017. [PMID: 28102204](https://doi.org/10.1038/s41598-017-28102-0)



For full product information, images and publications, please visit our [website](https://www.genetex.com).