

# DDDDK tag antibody

**Cat. No. GTX115043**

<b>Host</b>	Rabbit
<b>Clonality</b>	Polyclonal
<b>Isotype</b>	IgG
<b>Applications</b>	WB, ICC/IF, FCM, IP, ELISA
<b>Reactivity</b>	Species independent

References ( 24 )

Package

100 µl, 25 µl

## Applications

### Application Note

\*Optimal dilutions/concentrations should be determined by the researcher.

Suggested dilution	Recommended dilution
WB	1:1000-1:10000
ICC/IF	1:100-1:1000
FCM	Assay dependent
IP	Assay dependent
ELISA	1:1000-1:10000

Not tested in other applications.

## Properties

<b>Form</b>	Liquid
<b>Buffer</b>	PBS, 20% Glycerol
<b>Preservative</b>	0.01% Thimerosal
<b>Storage</b>	Store as concentrated solution. Centrifuge briefly prior to opening vial. For short-term storage (1-2 weeks), store at 4°C. For long-term storage, aliquot and store at -20°C or below. Avoid multiple freeze-thaw cycles.
<b>Concentration</b>	1 mg/ml (Please refer to the vial label for the specific concentration.)
<b>Immunogen</b>	The immunogen used to generate this antibody corresponds to DDDDK tag
<b>Purification</b>	Purified by antigen-affinity chromatography.
<b>Conjugation</b>	Unconjugated

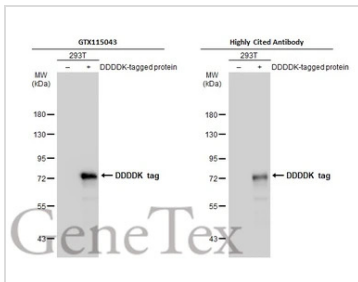
### Note

For laboratory research use only. Not for any clinical, therapeutic, or diagnostic use in humans or animals. Not for animal or human consumption.

Purchasers shall not, and agree not to enable third parties to, analyze, copy, reverse engineer or otherwise attempt to determine the structure or sequence of the product.

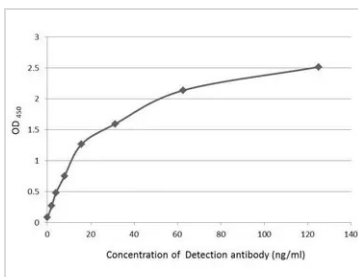


For full product information, images and publications, please visit our [website](#).

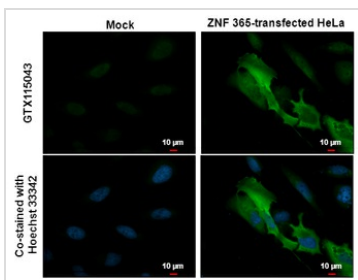
**DATA IMAGES**

**GTX115043 WB Image**

Non-transfected (–) and transfected (+) 293T whole cell extracts (30 µg) were separated by 7.5% SDS-PAGE, and the membranes were blotted with DDDDK tag antibody (GTX115043) diluted at 1:2000 and competitor's antibody diluted at 1:2000. The HRP-conjugated anti-rabbit IgG antibody (GTX213110-01) was used to detect the primary antibody.

\*The competitor is not affiliated with GeneTex and does not endorse this product.


**GTX115043 ELISA Image**

An ELISA plate is coated with 50 µL of a DDDDK tag conjugated BSA at concentration of 10 µg/mL. The peptide conjugated carrier protein is coated and detected with anti-DDDDK tag antibody (GTX115043) at concentration ranged from 1.95 to 125 ng/mL.

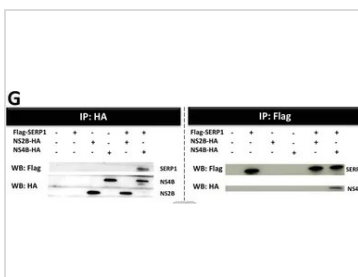

**GTX115043 ICC/IF Image**

DDDDK tag antibody detects DDDDK tag at cytoplasm and nucleus by immunofluorescent analysis. Samples: HeLa cells mock (left) and transfected with ZNF365–fusion protein (right) were fixed in 4% paraformaldehyde at RT for 15 min.

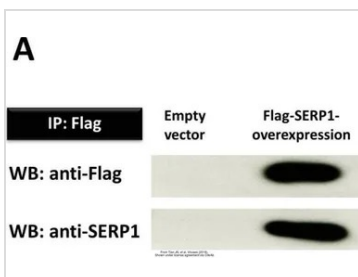
Green: DDDDK tag stained by DDDDK tag antibody (GTX115043) diluted at 1:1000.

Blue: Hoechst 33342 staining.

Scale bar = 10 µm.


**GTX115043 WB IP Image**

The data was published in the journal Viruses in 2019. [PMID: 31461934](https://pubmed.ncbi.nlm.nih.gov/31461934/)


**GTX115043 WB IP Image**

The data was published in the journal Viruses in 2019. [PMID: 31461934](https://pubmed.ncbi.nlm.nih.gov/31461934/)



For full product information, images and publications, please visit our [website](https://www.genetex.com).