

HA tag antibody

Cat. No. GTX115044

Host	Rabbit
Clonality	Polyclonal
Isotype	IgG
Applications	WB, ICC/IF, IP, ELISA, ChIP assay
Reactivity	Species independent

References (69)

 Review (5)

Package

100 µl, 25 µl

Applications

Application Note

*Optimal dilutions/concentrations should be determined by the researcher.

Suggested dilution	Recommended dilution
WB	1:1000-1:10000
ICC/IF	1:100-1:1000
IP	1:100-1:500
ELISA	1:1000-1:10000
ChIP assay	Assay dependent

Not tested in other applications.

Properties

Form	Liquid
Buffer	PBS, 1% BSA, 20% Glycerol
Preservative	0.025% ProClin 300
Storage	Store as concentrated solution. Centrifuge briefly prior to opening vial. For short-term storage (1-2 weeks), store at 4°C. For long-term storage, aliquot and store at -20°C or below. Avoid multiple freeze-thaw cycles.
Concentration	0.33 mg/ml (Please refer to the vial label for the specific concentration.)
Immunogen	The immunogen used to generate this antibody corresponds to HA tag
Purification	Purified by antigen-affinity chromatography.
Conjugation	Unconjugated

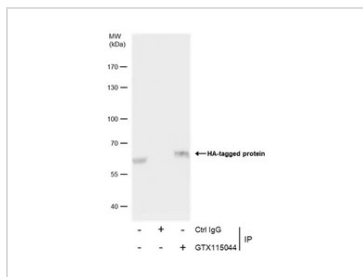
Note

For laboratory research use only. Not for any clinical, therapeutic, or diagnostic use in humans or animals. Not for animal or human consumption.

Purchasers shall not, and agree not to enable third parties to, analyze, copy, reverse engineer or otherwise attempt to determine the structure or sequence of the product.


 For full product information, images and publications, please visit our [website](#).

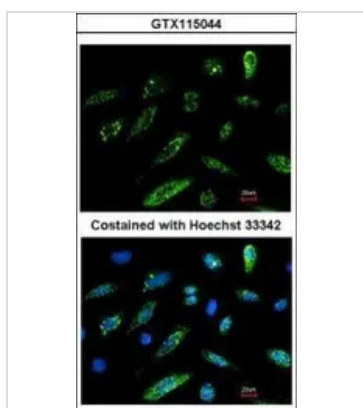
DATA IMAGES



GTX115044 IP Image

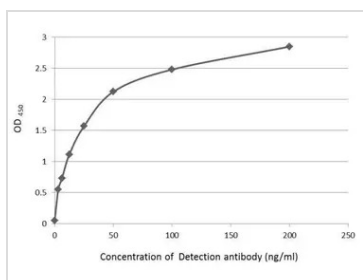
Immunoprecipitation of HA tag protein from 293T whole cell extracts using 5 µg of HA tag antibody (GTX115044).

Western blot analysis was performed using HA tag antibody (GTX115044) diluted at 1:2500. EasyBlot HRP-conjugated anti rabbit IgG antibody (GTX221666-01) was used to detect the primary antibody.



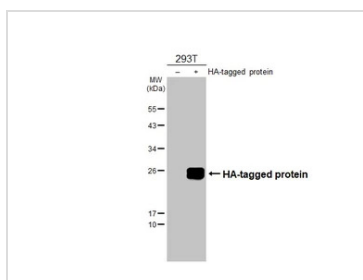
GTX115044 ICC/IF Image

Immunofluorescence analysis of HA-recombinant protein transfected HeLa cell which fixed with paraformaldehyde, using HA tag(GTX115044) antibody at 1:500 dilution.



GTX115044 ELISA Image

An ELISA plate is coated with 50 µL of a HA-Tag conjugated BSA at concentration of 5 µg/mL. The peptide conjugated carrier protein is coated and detected with anti-HA tag antibody (GTX115044) at concentration ranged from 3.1 to 200 ng/mL.



GTX115044 WB Image

Non-transfected (-) and transfected (+) 293T whole cell extracts (30 µg) were separated by 12% SDS-PAGE, and the membrane was blotted with HA tag antibody (GTX115044) diluted at 1:3000. The HRP-conjugated anti-rabbit IgG antibody (GTX213110-01) was used to detect the primary antibody.



For full product information, images and publications, please visit our [website](#).