

6X His tag antibody

Cat. No. GTX115045

Host	Rabbit
Clonality	Polyclonal
Isotype	IgG
Applications	WB, IHC-Wm, IP, ELISA
Reactivity	Species independent

References (18)





 Review (1)

Package

100 µl, 25 µl

Applications

Application Note

*Optimal dilutions/concentrations should be determined by the researcher.

Suggested dilution	Recommended dilution
WB	1:5000-1:20000
IHC-Wm	Assay dependent
IP	1:100-1:500
ELISA	1:1000-1:10000

Not tested in other applications.

Properties

Form	Liquid
Buffer	PBS, 1% BSA, 20% Glycerol
Preservative	0.025% ProClin 300
Storage	Store as concentrated solution. Centrifuge briefly prior to opening vial. For short-term storage (1-2 weeks), store at 4°C. For long-term storage, aliquot and store at -20°C or below. Avoid multiple freeze-thaw cycles.
Concentration	0.1 mg/ml (Please refer to the vial label for the specific concentration.)
Immunogen	The immunogen used to generate this antibody corresponds to 6X His tag
Purification	Purified by antigen-affinity chromatography.
Conjugation	Unconjugated

Note

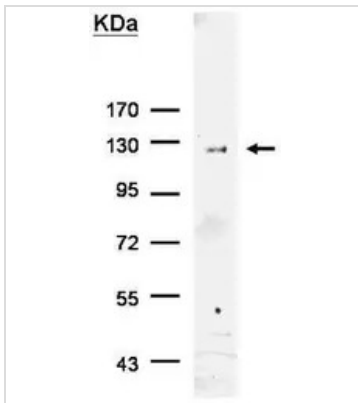
For laboratory research use only. Not for any clinical, therapeutic, or diagnostic use in humans or animals. Not for animal or human consumption.

Purchasers shall not, and agree not to enable third parties to, analyze, copy, reverse engineer or otherwise attempt to determine the structure or sequence of the product.



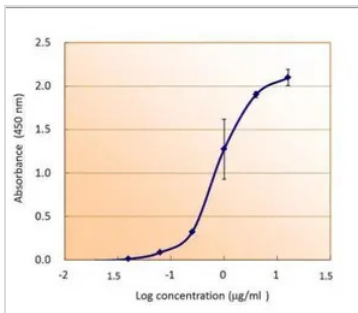
For full product information, images and publications, please visit our [website](#).

DATA IMAGES



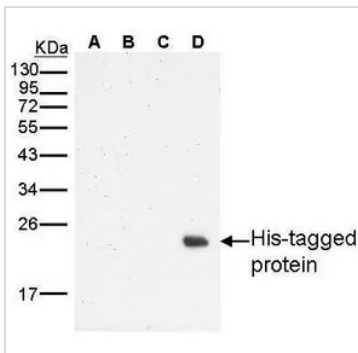
GTX115045 IP Image

His-tagged protein was immunoprecipitated from transfected cells using 8 μ g of 6X His tag antibody (GTX115045). The precipitated His-tagged protein was detected by GTX115045 diluted at 1:500, and used EasyBlot anti-rabbit IgG (GTX221666-01) as secondary reagent.



GTX115045 ELISA Image

6X His tag antibody detects His-tagged recombinant proteins by indirect ELISA analysis. Various dilutions of His-tagged recombinant proteins coated onto the 96-well plate were detected by using 2.5 μ g/ml 6x His antibody (GTX115045). Bound Abs were further detected by using HRP-conjugated goat anti-rabbit IgG (GTX213110-01) with HRP substrates.



GTX115045 WB Image

Sample

A: 10 μ g of non-transformed E. coli lysate

B: 10 μ g of non-transformed E. coli lysate, induced

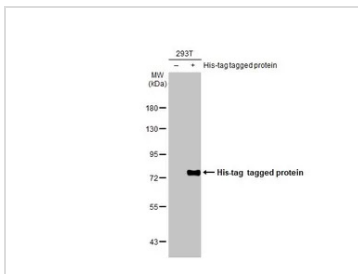
C: 10 μ g E.coli Lysate harbouring His-tagged recombinant protein (N-terminal linked), non-induced

D: 10 μ g E.coli Lysate harbouring His-tagged recombinant protein (N-terminal linked), induced

12% SDS PAGE

GTX115045 diluted at 1:1000

The HRP-conjugated anti-rabbit IgG antibody (GTX213110-01) was used to detect the primary antibody.



GTX115045 WB Image

Non-transfected (–) and transfected (+) 293T whole cell extracts (30 μ g) were separated by 7.5% SDS-PAGE, and the membrane was blotted with 6X His tag antibody (GTX115045) diluted at 1:10000. The HRP-conjugated anti-rabbit IgG antibody (GTX213110-01) was used to detect the primary antibody.



For full product information, images and publications, please visit our [website](https://www.genetex.com).