

# gamma Catenin antibody [15F11]

**Cat. No. GTX11506**

<b>Host</b>	Mouse
<b>Clonality</b>	Monoclonal
<b>Isotype</b>	IgG1
<b>Applications</b>	WB, ICC/IF, IHC-Fr, IP
<b>Reactivity</b>	Human, Bovine, Dog

**Package**  
100 µl

## Applications

### Application Note

\*Optimal dilutions/concentrations should be determined by the researcher.

Suggested dilution	Recommended dilution
WB	1:500~1:2000
ICC/IF	1:1,000
IHC-Fr	Assay dependent
IP	Assay dependent

Not tested in other applications.

**Calculated MW** 82 kDa. ( [Note](#) )

## Properties

<b>Form</b>	Liquid
<b>Buffer</b>	Ascites
<b>Preservative</b>	No preservatives
<b>Storage</b>	Store as concentrated solution. Centrifuge briefly prior to opening vial. For short-term storage (1-2 weeks), store at 4°C. For long-term storage, aliquot and store at -20°C or below. Avoid multiple freeze-thaw cycles.
<b>Immunogen</b>	recombinant chicken plakoglobin.
<b>Purification</b>	Unpurified
<b>Conjugation</b>	Unconjugated

### Note

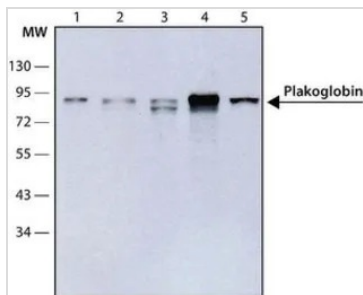
For laboratory research use only. Not for any clinical, therapeutic, or diagnostic use in humans or animals. Not for animal or human consumption.

Purchasers shall not, and agree not to enable third parties to, analyze, copy, reverse engineer or otherwise attempt to determine the structure or sequence of the product.



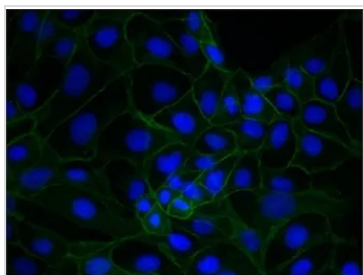
For full product information, images and publications, please visit our [website](#).

## DATA IMAGES



### GTX11506 WB Image

WB analysis of (1)HepG2 (2) MCF7 (3) HeLa (4) MBDK (5) MDCK cells using GTX11506 gamma Catenin antibody [15F11] at 1:500.



### GTX11506 ICC/IF Image

ICC/IF analysis of MDCK cells using GTX11506 gamma Catenin antibody [15F11] at 1:500 (green) with DAPI (blue). Cells were fixed and permeabilized with 4% PFA followed by 0.5% Triton X-100.



For full product information, images and publications, please visit our [website](#).