

STAM antibody [N2C2], Internal

Cat. No. GTX115060

| | |
|---------------------|-------------------|
| Host | Rabbit |
| Clonality | Polyclonal |
| Isotype | IgG |
| Applications | WB, ICC/IF, IHC-P |
| Reactivity | Human, Mouse |

References (1)

Package

100 µl, 25 µl

Applications

Application Note

*Optimal dilutions/concentrations should be determined by the researcher.

| Suggested dilution | Recommended dilution |
|--------------------|----------------------|
| WB | 1:500-1:3000 |
| ICC/IF | Assay dependent |
| IHC-P | 1:100-1:1000 |

Not tested in other applications.

Calculated MW 59 kDa. ([Note](#))

Properties

| | |
|----------------------|--|
| Form | Liquid |
| Buffer | PBS, 20% Glycerol |
| Preservative | 0.01% Thimerosal |
| Storage | Store as concentrated solution. Centrifuge briefly prior to opening vial. For short-term storage (1-2 weeks), store at 4°C. For long-term storage, aliquot and store at -20°C or below. Avoid multiple freeze-thaw cycles. |
| Concentration | 1 mg/ml (Please refer to the vial label for the specific concentration.) |
| Immunogen | Recombinant protein encompassing a sequence within the center region of human STAM. The exact sequence is proprietary. |
| Purification | Purified by antigen-affinity chromatography. |
| Conjugation | Unconjugated |

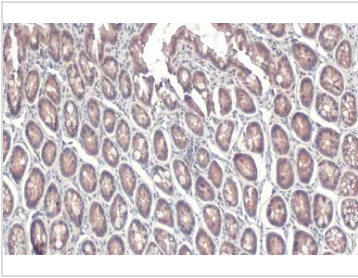
Note

For laboratory research use only. Not for any clinical, therapeutic, or diagnostic use in humans or animals. Not for animal or human consumption.

Purchasers shall not, and agree not to enable third parties to, analyze, copy, reverse engineer or otherwise attempt to determine the structure or sequence of the product.

For full product information, images and publications, please visit our [website](#).

DATA IMAGES

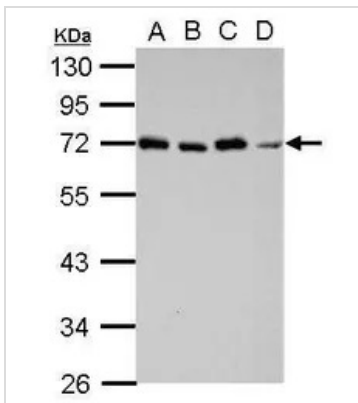
**GTX115060 IHC-P Image**

STAM antibody [N2C2], Internal detects STAM protein at cytoplasm by immunohistochemical analysis.

Sample: Paraffin-embedded mouse intestine.

STAM stained by STAM antibody [N2C2], Internal (GTX115060) diluted at 1:500.

Antigen Retrieval: Citrate buffer, pH 6.0, 15 min

**GTX115060 WB Image**

Sample (30 ug of whole cell lysate)

A: Jurkat

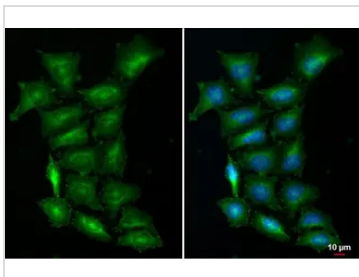
B: Raji

C: K562

D: NCI-H929

10% SDS PAGE

GTX115060 diluted at 1:1000

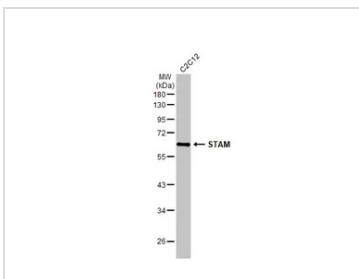
**GTX115060 ICC/IF Image**

STAM antibody [N2C2], Internal detects STAM protein at cytoplasm by immunofluorescent analysis.

Sample: HeLa cells were fixed in 4% paraformaldehyde at RT for 15 min.

Green: STAM stained by STAM antibody [N2C2], Internal (GTX115060) diluted at 1:500.

Blue: Fluoroshield with DAPI (GTX30920).

**GTX115060 WB Image**

Whole cell extract (30 µg) was separated by -% SDS-PAGE, and the membrane was blotted with STAM antibody [N2C2], Internal (GTX115060) diluted at 1:1000. The HRP-conjugated anti-rabbit IgG antibody (GTX213110-01) was used to detect the primary antibody.



For full product information, images and publications, please visit our [website](http://www.genetex.com).