

Liprin alpha 1 antibody [N1N2], N-term

Cat. No. GTX115098

Host	Rabbit
Clonality	Polyclonal
Isotype	IgG
Applications	WB, ICC/IF, IHC-Fr, IP, IHC
Reactivity	Human, Mouse, Rat

References (2)

Package

100 µl, 25 µl

Applications

Application Note

*Optimal dilutions/concentrations should be determined by the researcher.

Suggested dilution	Recommended dilution
WB	1:500-1:20000
ICC/IF	1:100-1:1000
IHC-Fr	Assay dependent
IP	1:100-1:500
IHC	Assay dependent

Not tested in other applications.

Calculated MW 136 kDa. ([Note](#))

Properties

Form	Liquid
Buffer	PBS, 20% Glycerol
Preservative	0.025% ProClin 300
Storage	Store as concentrated solution. Centrifuge briefly prior to opening vial. For short-term storage (1-2 weeks), store at 4°C. For long-term storage, aliquot and store at -20°C or below. Avoid multiple freeze-thaw cycles.
Concentration	0.98 mg/ml (Please refer to the vial label for the specific concentration.)
Immunogen	Recombinant protein encompassing a sequence within the N-terminus region of human Liprin alpha 1. The exact sequence is proprietary.
Purification	Purified by antigen-affinity chromatography.
Conjugation	Unconjugated



For full product information, images and publications, please visit our [website](#).

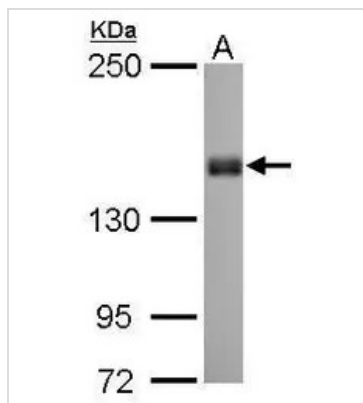
Date 2025 / 05 / 22 Page 1 of 2

For laboratory research use only. Not for any clinical, therapeutic, or diagnostic use in humans or animals. Not for animal or human consumption.

Note

Purchasers shall not, and agree not to enable third parties to, analyze, copy, reverse engineer or otherwise attempt to determine the structure or sequence of the product.

DATA IMAGES



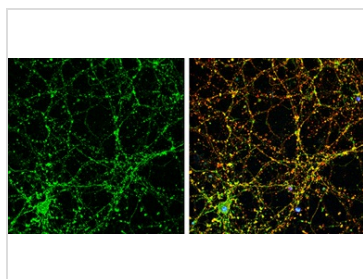
GTx115098 WB Image

Liprin alpha 1 antibody [N1N2], N-term detects PPFIA1 protein by Western blot analysis.

A. 30 µg Neuro2A whole cell lysate/extract

5 % SDS-PAGE

Liprin alpha 1 antibody [N1N2], N-term (GTx115098) dilution: 1:1000



GTx115098 ICC/IF Image

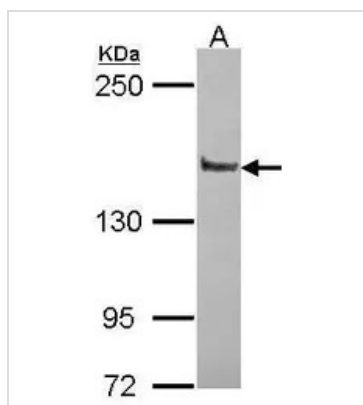
Liprin alpha 1 antibody [N1N2], N-term detects Liprin alpha 1 protein by immunofluorescent analysis.

Sample: DIV9 rat E18 primary cortical neuron cells were fixed in 4% paraformaldehyde at RT for 15 min.

Green: Liprin alpha 1 stained by Liprin alpha 1 antibody [N1N2], N-term (GTx115098) diluted at 1:500.

Red: beta Tubulin 3/ Tuj1, stained by beta Tubulin 3/ Tuj1 antibody [GT1338] (GTx631831) diluted at 1:500.

Blue: Fluoroshield with DAPI (GTx30920).



GTx115098 WB Image

Sample (30 ug of whole cell lysate)

A: JurKat

5% SDS PAGE

GTx115098 diluted at 1:10000



For full product information, images and publications, please visit our [website](https://www.genetex.com).