

IL2 antibody [JES6-1A12]

Cat. No. GTX11510

Host	Rat
Clonality	Monoclonal
Isotype	IgG2a
Applications	WB, IP, ELISA
Reactivity	Mouse

Package
250 µg

Applications

Application Note

*Optimal dilutions/concentrations should be determined by the researcher.

Suggested dilution	Recommended dilution
WB	1-5µg/ml
IP	Assay dependent
ELISA	1-4µg/ml

Not tested in other applications.

Calculated MW 19 kDa. ([Note](#))

Product Note Clone JES6-1A12 may be used in an indirect ELISA or as the capture reagent in a sandwich ELISA with GTX11513 clone JES6-5H4 as the detection reagent.

Properties

Form	Liquid
Buffer	PBS
Preservative	0.09% Sodium azide
Storage	Store as concentrated solution. Centrifuge briefly prior to opening vial. For short-term storage (1-2 weeks), store at 4°C. For long-term storage, aliquot and store at -20°C or below. Avoid multiple freeze-thaw cycles.
Concentration	1.0 mg/ml (Please refer to the vial label for the specific concentration.)
Immunogen	E. coli expressed recombinant mouse IL-2
Purification	Purified by affinity chromatography From tissue culture supernatant
Conjugation	Unconjugated



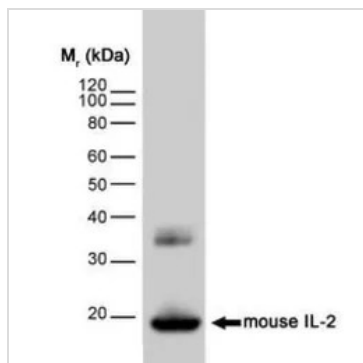
For full product information, images and publications, please visit our [website](#).

For laboratory research use only. Not for any clinical, therapeutic, or diagnostic use in humans or animals. Not for animal or human consumption.

Note

Purchasers shall not, and agree not to enable third parties to, analyze, copy, reverse engineer or otherwise attempt to determine the structure or sequence of the product.

DATA IMAGES



GTX11510 WB Image

WB analysis of mouse IL-2 recombinant protein using GTX11510 IL2 antibody [JES6-1A12].



For full product information, images and publications, please visit our [website](#).