

## VDP / p115 antibody

Cat. No. GTX115115

Host	Rabbit
Clonality	Polyclonal
Isotype	IgG
Applications	WB, ICC/IF
Reactivity	Human, Mouse

References ( 2 )

Package

100 µl, 25 µl

## Applications

## Application Note

\*Optimal dilutions/concentrations should be determined by the researcher.

Suggested dilution	Recommended dilution
WB	1:500-1:3000
ICC/IF	1:100-1:1000

Not tested in other applications.

Calculated MW 108 kDa. ( [Note](#) )

## Properties

Form	Liquid
Buffer	PBS, 20% Glycerol
Preservative	0.01% Thimerosal
Storage	Store as concentrated solution. Centrifuge briefly prior to opening vial. For short-term storage (1-2 weeks), store at 4°C. For long-term storage, aliquot and store at -20°C or below. Avoid multiple freeze-thaw cycles.
Concentration	1 mg/ml (Please refer to the vial label for the specific concentration.)
Immunogen	Recombinant protein encompassing a sequence within the C-terminus region of human VDP / p115. The exact sequence is proprietary.
Purification	Purified by antigen-affinity chromatography.
Conjugation	Unconjugated

## Note

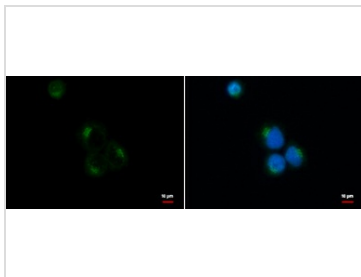
For laboratory research use only. Not for any clinical, therapeutic, or diagnostic use in humans or animals. Not for animal or human consumption.

Purchasers shall not, and agree not to enable third parties to, analyze, copy, reverse engineer or otherwise attempt to determine the structure or sequence of the product.



For full product information, images and publications, please visit our [website](#).

## DATA IMAGES



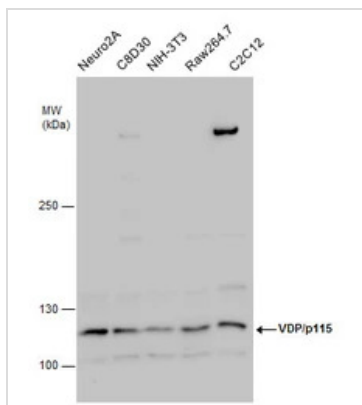
### GTXT115115 ICC/IF Image

USO1 antibody detects USO1 protein at Golgi apparatus by immunofluorescent analysis.

Sample: A431 cells were fixed in 100% MeOH for 5 min.

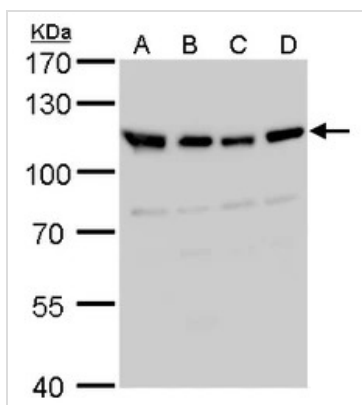
Green: USO1 protein stained by USO1 antibody (GTXT115115) diluted at 1:500.

Blue: Hoechst 33342 staining.



### GTXT115115 WB Image

VDP/p115 antibody detects VDP/p115 protein by western blot analysis. Various whole cell extracts (30 µg) were separated by 5% SDS-PAGE, and the membrane was blotted with VDP/p115 antibody (GTXT115115) diluted by 1:1000.



### GTXT115115 WB Image

VDP/p115 antibody detects VDP/p115 protein by Western blot analysis.

A. 30 µg 293T

B. 30 µg A431

C. 30 µg HeLa

D. 30 µg HepG2

7.5 % SDS-PAGE

VDP/p115 antibody (GTXT115115) dilution: 1:1000



For full product information, images and publications, please visit our [website](https://www.genetex.com).