

E-Cadherin antibody [DECMA-1]

Cat. No. GTX11512

Host	Rat
Clonality	Monoclonal
Isotype	IgG1
Applications	WB, ICC/IF, IHC-P, IHC-Fr, IP
Reactivity	Human, Mouse, Bovine, Dog

References (10)

Package

100 µl

Applications

Application Note

*Optimal dilutions/concentrations should be determined by the researcher.

Suggested dilution	Recommended dilution
WB	Assay dependent
ICC/IF	1:1,600
IHC-P	Assay dependent
IHC-Fr	Assay dependent
IP	Assay dependent

Not tested in other applications.

Calculated MW 98 kDa. ([Note](#))

Product Note

Monoclonal Anti-Uvomorulin/E-Cadherin was selected against the mouse cell adhesion molecule uvomorulin/E-Cadherin. The antibody localizes the cell surface glycoprotein uvomorulin/E-cadherin that has been found to be identical to L-CAM, Cell CAM 80/120, and ARC-1. It blocks both the aggregation of mouse embryonal carcinoma cells and the compaction of pre-implantation embryos. The antibody disrupts confluent monolayers of Madin-Darby canine kidney (MDCK) epithelial cells. In indirect immunofluorescent staining of MDCK cells grown in culture, the antibody shows strong staining on the membrane of adjacent cells, after treatment with 0.5% Triton-X 100.

Properties

Form	Liquid
Buffer	Ascites
Preservative	15mM Sodium azide
Storage	Store as concentrated solution. Centrifuge briefly prior to opening vial. For short-term storage (1-2 weeks), store at 4°C. For long-term storage, aliquot and store at -20°C or below. Avoid multiple freeze-thaw cycles.
Immunogen	mouse embryonal carcinoma cell line PCC4 Aza R1.
Purification	Unpurified



For full product information, images and publications, please visit our [website](#).

Date 2025 / 04 / 25 Page 1 of 2

Conjugation

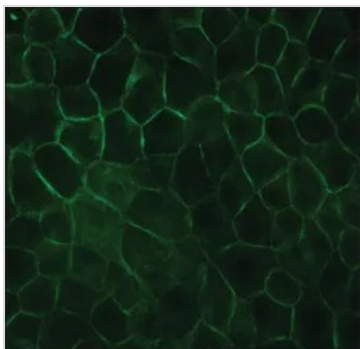
Unconjugated

Note

For laboratory research use only. Not for any clinical, therapeutic, or diagnostic use in humans or animals. Not for animal or human consumption.

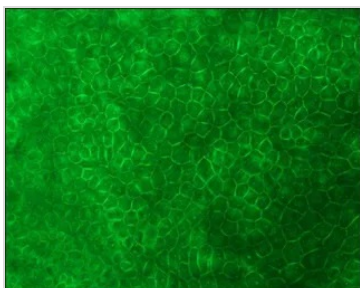
Purchasers shall not, and agree not to enable third parties to, analyze, copy, reverse engineer or otherwise attempt to determine the structure or sequence of the product.

DATA IMAGES



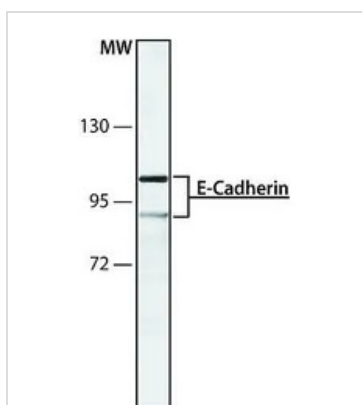
GTX11512 ICC/IF Image

ICC/IF analysis of MDCK cells using GTX11512 E-Cadherin antibody [DECMA-1] at 1:3200. Cells were fixed and permeabilized with methanol followed by acetone.



GTX11512 ICC/IF Image

ICC/IF analysis of MDCK cells using GTX11512 E-Cadherin antibody [DECMA-1] at 1:3,200. Cells were fixed and permeabilized with cold methanol followed by acetone.



GTX11512 WB Image

WB analysis of MDCK cells using GTX11512 E-Cadherin antibody [DECMA-1] at 1:250.



For full product information, images and publications, please visit our [website](https://www.genetex.com).