

GPAA1 antibody

Cat. No. GTX115131

Host	Rabbit
Clonality	Polyclonal
Isotype	IgG
Applications	WB, IHC-P
Reactivity	Human, Mouse

References (2)

Package

100 µl, 25 µl

Applications

Application Note

*Optimal dilutions/concentrations should be determined by the researcher.

Suggested dilution	Recommended dilution
WB	1:500-1:3000
IHC-P	1:100-1:1000

Not tested in other applications.

Calculated MW	68 kDa. (Note)
Product Note	KO/KD validation is based on published data (PMID: 35231079).

Properties

Form	Liquid
Buffer	PBS, 1% BSA, 20% Glycerol
Preservative	0.01% Thimerosal
Storage	Store as concentrated solution. Centrifuge briefly prior to opening vial. For short-term storage (1-2 weeks), store at 4°C. For long-term storage, aliquot and store at -20°C or below. Avoid multiple freeze-thaw cycles.
Concentration	0.76 mg/ml (Please refer to the vial label for the specific concentration.)
Immunogen	Recombinant protein encompassing a sequence within the center region of human GPAA1. The exact sequence is proprietary.
Purification	Purified by antigen-affinity chromatography.
Conjugation	Unconjugated

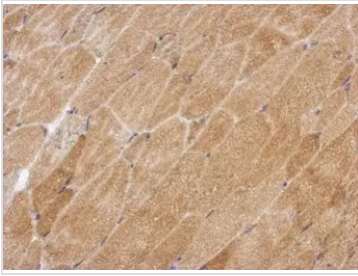
Note

For laboratory research use only. Not for any clinical, therapeutic, or diagnostic use in humans or animals. Not for animal or human consumption.

Purchasers shall not, and agree not to enable third parties to, analyze, copy, reverse engineer or otherwise attempt to determine the structure or sequence of the product.

For full product information, images and publications, please visit our [website](#).

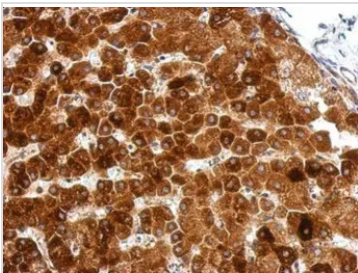
DATA IMAGES



GTX115131 IHC-P Image

Immunohistochemical analysis of paraffin-embedded mouse muscle, using GPAA1(GTX115131) antibody at 1:500 dilution.

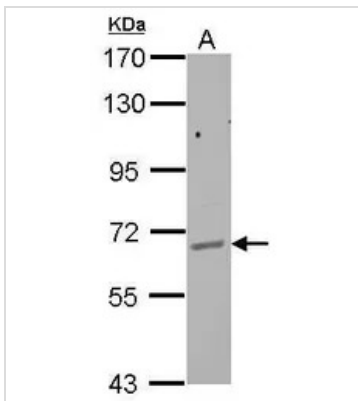
Antigen Retrieval: Trilogy™ (EDTA based, pH 8.0) buffer, 15min



GTX115131 IHC-P Image

Immunohistochemical analysis of paraffin-embedded human hepatoma, using GPAA1(GTX115131) antibody at 1:500 dilution.

Antigen Retrieval: Trilogy™ (EDTA based, pH 8.0) buffer, 15min



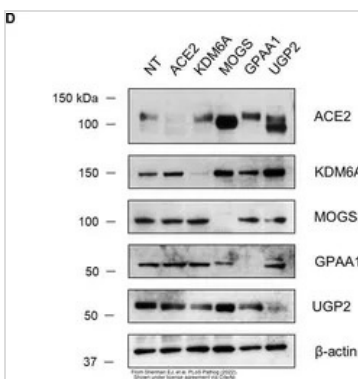
GTX115131 WB Image

Sample (30 ug of whole cell lysate)

A: HepG2

7.5% SDS PAGE

GTX115131 diluted at 1:1000



GTX115131 WB Image

The data was published in the 2022 in PLoS Pathog. [PMID: 35231079](https://doi.org/10.1371/journal.ppat.1009079)



For full product information, images and publications, please visit our [website](https://www.genetex.com).