

USP14 antibody

Cat. No. GTX115186

| | |
|--------------------|-------------------|
| Host | Rabbit |
| Clonality | Polyclonal |
| Isotype | IgG |
| Application | WB, IHC-P |
| Reactivity | Human, Mouse, Rat |

Reference (1)

★★★★★ Review (1)

Package
100 µl, 25 µl

APPLICATION

Application Note

*Optimal dilutions/concentrations should be determined by the researcher.

| Suggested dilution | Recommended dilution |
|--------------------|----------------------|
| WB | 1:500-1:3000 |
| IHC-P | 1:100-1:1000 |

Not tested in other applications.

Calculated MW 56 kDa. ([Note](#))

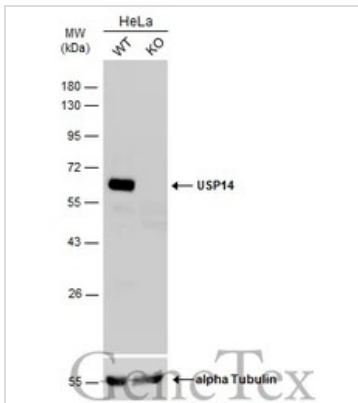
PROPERTIES

| | |
|----------------------|--|
| Form | Liquid |
| Buffer | 0.1M Tris, 0.1M Glycine, 20% Glycerol |
| Preservative | 0.01% Thimerosal |
| Storage | Store as concentrated solution. Centrifuge briefly prior to opening vial. For short-term storage (1-2 weeks), store at 4°C. For long-term storage, aliquot and store at -20°C or below. Avoid multiple freeze-thaw cycles. |
| Concentration | 1 mg/ml (Please refer to the vial label for the specific concentration.) |
| Immunogen | Recombinant protein encompassing a sequence within the C-terminus region of human USP14. The exact sequence is proprietary. |
| Purification | Purified by antigen-affinity chromatography. |
| Conjugation | Unconjugated |
| Note | For laboratory research use only. Not for any clinical, therapeutic, or diagnostic use in humans or animals. Not for animal or human consumption. Purchasers shall not, and agree not to enable third parties to, analyze, copy, reverse engineer or otherwise attempt to determine the structure or sequence of the product. |



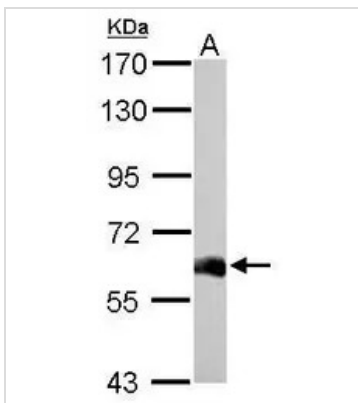
For full product information, images and publications, please visit our [website](#).

DATA IMAGES



GTK115186 WB Image

Wild-type (WT) and USP14 knockout (KO) HeLa cell extracts (30 µg) were separated by 10% SDS-PAGE, and the membrane was blotted with USP14 antibody (GTK115186) diluted at 1:1000. The HRP-conjugated anti-rabbit IgG antibody (GTK213110-01) was used to detect the primary antibody.



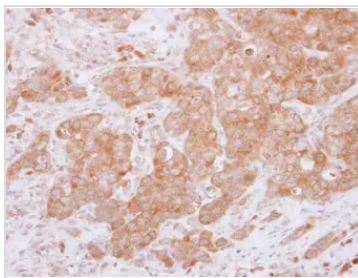
GTK115186 WB Image

USP14 antibody detects USP14 protein by Western blot analysis.

A. 50 µg mouse brain lysate/extract

7.5 % SDS-PAGE

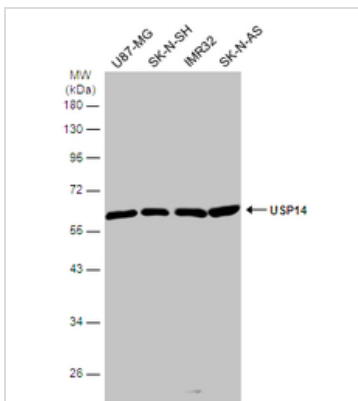
USP14 antibody (GTK115186) dilution: 1:1000



GTK115186 IHC-P Image

Immunohistochemical analysis of paraffin-embedded human breast cancer, using USP14(GTK115186) antibody at 1:500 dilution.

Antigen Retrieval: Trilogy™ (EDTA based, pH 8.0) buffer, 15min



GTK115186 WB Image

Various whole cell extracts (30 µg) were separated by 10% SDS-PAGE, and the membrane was blotted with USP14 antibody (GTK115186) diluted at 1:500. The HRP-conjugated anti-rabbit IgG antibody (GTK213110-01) was used to detect the primary antibody.



For full product information, images and publications, please visit our [website](https://www.genetex.com).