

AP4M1 antibody [N1C1]

Cat. No. GTX115196

Host	Rabbit
Clonality	Polyclonal
Isotype	IgG
Applications	WB, IHC-P
Reactivity	Human, Mouse

Package
100 µl, 25 µl

Applications

Application Note

*Optimal dilutions/concentrations should be determined by the researcher.

Suggested dilution	Recommended dilution
WB	1:500-1:3000
IHC-P	1:100-1:1000

Not tested in other applications.

Calculated MW 50 kDa. ([Note](#))

Properties

Form	Liquid
Buffer	0.1M Tris, 0.1M Glycine, 20% Glycerol
Preservative	0.01% Thimerosal
Storage	Store as concentrated solution. Centrifuge briefly prior to opening vial. For short-term storage (1-2 weeks), store at 4°C. For long-term storage, aliquot and store at -20°C or below. Avoid multiple freeze-thaw cycles.
Concentration	1 mg/ml (Please refer to the vial label for the specific concentration.)
Immunogen	Recombinant protein encompassing a sequence within the center region of human AP4M1. The exact sequence is proprietary.
Purification	Purified by antigen-affinity chromatography.
Conjugation	Unconjugated

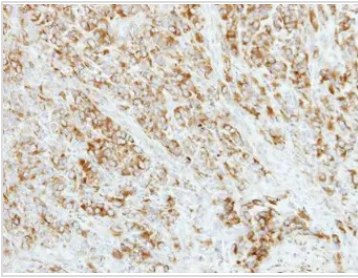
Note

For laboratory research use only. Not for any clinical, therapeutic, or diagnostic use in humans or animals. Not for animal or human consumption.

Purchasers shall not, and agree not to enable third parties to, analyze, copy, reverse engineer or otherwise attempt to determine the structure or sequence of the product.

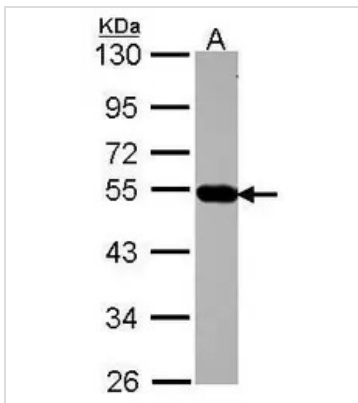


For full product information, images and publications, please visit our [website](#).

DATA IMAGES

GTx115196 IHC-P Image

Immunohistochemical analysis of paraffin-embedded TOV-21G xenograft, using AP4M1 (GTx115196) antibody at 1:500 dilution.

Antigen Retrieval: Citrate buffer, pH 6.0, 15 min

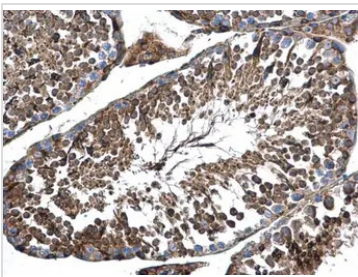

GTx115196 WB Image

Sample (30 ug of whole cell lysate)

A: A431 (GTx27909)

10% SDS PAGE

GTx115196 diluted at 1:1000


GTx115196 IHC-P Image

AP4M1 antibody [N1C1] detects AP4M1 protein at cytoplasm in mouse testis by immunohistochemical analysis.

Sample: Paraffin-embedded mouse testis.

AP4M1 antibody [N1C1] (GTx115196) diluted at 1:500.

Antigen Retrieval: Citrate buffer, pH 6.0, 15 min



For full product information, images and publications, please visit our [website](https://www.genetex.com).