

AIMP1 antibody

Cat. No. GTX115209

Host	Rabbit
Clonality	Polyclonal
Isotype	IgG
Applications	WB, ICC/IF, IHC-P, IHC-Wm
Reactivity	Human, Mouse, Drosophila

★★★★★ Review (1)

Package
100 µl, 25 µl

Applications

Application Note

*Optimal dilutions/concentrations should be determined by the researcher.

Suggested dilution	Recommended dilution
WB	1:500-1:3000
ICC/IF	1:100-1:1000
IHC-P	1:100-1:1000
IHC-Wm	Assay dependent

Not tested in other applications.

Calculated MW 34 kDa. ([Note](#))

Properties

Form	Liquid
Buffer	0.1M Tris, 0.1M Glycine, 20% Glycerol
Preservative	0.01% Thimerosal
Storage	Store as concentrated solution. Centrifuge briefly prior to opening vial. For short-term storage (1-2 weeks), store at 4°C. For long-term storage, aliquot and store at -20°C or below. Avoid multiple freeze-thaw cycles.
Concentration	1 mg/ml (Please refer to the vial label for the specific concentration.)
Immunogen	Recombinant protein encompassing a sequence within the center region of human AIMP1. The exact sequence is proprietary.
Purification	Purified by antigen-affinity chromatography.
Conjugation	Unconjugated



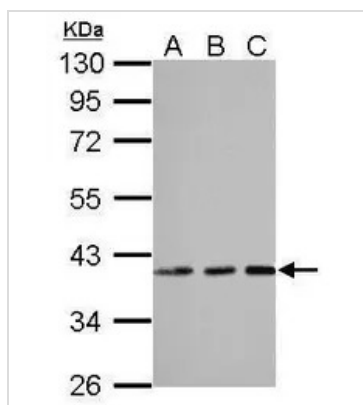
For full product information, images and publications, please visit our [website](#).

For laboratory research use only. Not for any clinical, therapeutic, or diagnostic use in humans or animals. Not for animal or human consumption.

Note

Purchasers shall not, and agree not to enable third parties to, analyze, copy, reverse engineer or otherwise attempt to determine the structure or sequence of the product.

DATA IMAGES



GTX115209 WB Image

Sample (30 ug of whole cell lysate)

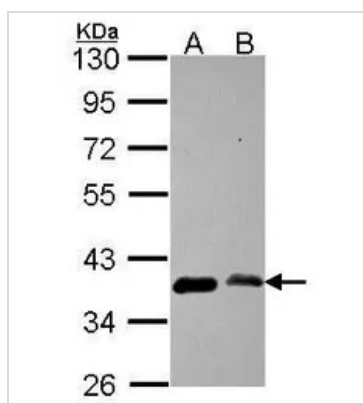
A: NIH-3T3

B: JC

C: BCL-1

10% SDS PAGE

GTX115209 diluted at 1:1000



GTX115209 WB Image

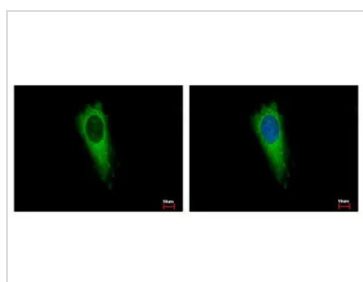
Sample (30 ug of whole cell lysate)

A: HeLa

B: JurKat

10% SDS PAGE

GTX115209 diluted at 1:1000



GTX115209 ICC/IF Image

AIMP1 antibody detects SCYE1 protein at Cytoplasm by immunofluorescent analysis.

Sample: HeLa cells were fixed in 4% paraformaldehyde at RT for 15 min.

Green: SCYE1 protein stained by AIMP1 antibody (GTX115209) diluted at 1:500.

Blue: Hoechst 33343 staining.



For full product information, images and publications, please visit our [website](#).