

## RNF40 antibody [N1N2], N-term

Cat. No. GTX115295

Host	Rabbit
Clonality	Polyclonal
Isotype	IgG
Applications	WB, ICC/IF, IHC-P, IP
Reactivity	Human

References ( 1 )

Package

100 µl, 25 µl

## Applications

## Application Note

\*Optimal dilutions/concentrations should be determined by the researcher.

Suggested dilution	Recommended dilution
WB	1:500-1:3000
ICC/IF	1:100-1:1000
IHC-P	1:100-1:1000
IP	1:100-1:500

Not tested in other applications.

**Calculated MW** 114 kDa. ( [Note](#) )

**Product Note** KO/KD validation is based on published data (PMID: 35906200).

## Properties

Form	Liquid
Buffer	PBS, 1% BSA, 20% Glycerol
Preservative	0.01% Thimerosal
Storage	Store as concentrated solution. Centrifuge briefly prior to opening vial. For short-term storage (1-2 weeks), store at 4°C. For long-term storage, aliquot and store at -20°C or below. Avoid multiple freeze-thaw cycles.
Concentration	1 mg/ml (Please refer to the vial label for the specific concentration.)
Immunogen	Recombinant protein encompassing a sequence within the N-terminus region of human RNF40. The exact sequence is proprietary.
Purification	Purified by antigen-affinity chromatography.
Conjugation	Unconjugated



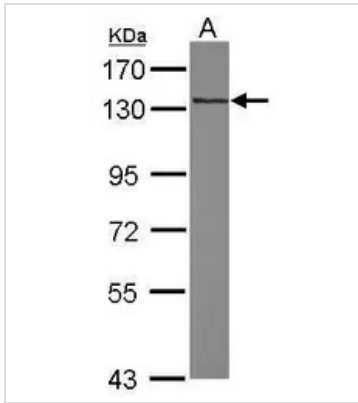
For full product information, images and publications, please visit our [website](#).

For laboratory research use only. Not for any clinical, therapeutic, or diagnostic use in humans or animals. Not for animal or human consumption.

## Note

Purchasers shall not, and agree not to enable third parties to, analyze, copy, reverse engineer or otherwise attempt to determine the structure or sequence of the product.

## DATA IMAGES



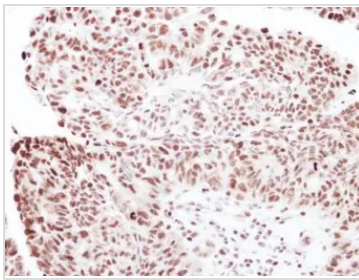
### GTx115295 WB Image

Sample (30 ug of whole cell lysate)

A: IMR32

7.5% SDS PAGE

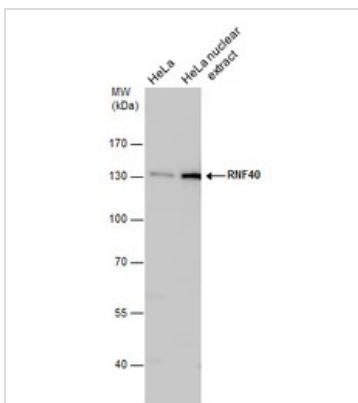
GTx115295 diluted at 1:1000



### GTx115295 IHC-P Image

Immunohistochemical analysis of paraffin-embedded human colon carcinoma, using RNF40(GTx115295) antibody at 1:250 dilution.

Antigen Retrieval: Trilogy™ (EDTA based, pH 8.0) buffer, 15min



### GTx115295 WB Image

RNF40 antibody detects RNF40 protein by western blot analysis. HeLa whole cell extracts and nuclear extracts (30 µg) were separated by 7.5% SDS-PAGE, and the membrane was blotted with RNF40 antibody (GTx115295) diluted by 1:1000.



For full product information, images and publications, please visit our [website](https://www.genetex.com).