

## SETDB1 antibody [N1], N-term

Cat. No. GTX115305

Host	Rabbit
Clonality	Polyclonal
Isotype	IgG
Applications	WB, IHC-P, IP, ChIP assay
Reactivity	Human, Mouse

References ( 4 )

Package

100 µl, 25 µl

## Applications

## Application Note

\*Optimal dilutions/concentrations should be determined by the researcher.

Suggested dilution	Recommended dilution
WB	1:500-1:3000
IHC-P	Assay dependent
IP	1:100-1:500
ChIP assay	Assay dependent

Not tested in other applications.

**Calculated MW** 143 kDa. ( [Note](#) )

## Properties

Form	Liquid
Buffer	PBS, 20% Glycerol
Preservative	0.025% ProClin 300
Storage	Store as concentrated solution. Centrifuge briefly prior to opening vial. For short-term storage (1-2 weeks), store at 4°C. For long-term storage, aliquot and store at -20°C or below. Avoid multiple freeze-thaw cycles.
Concentration	0.53 mg/ml (Please refer to the vial label for the specific concentration.)
Immunogen	Recombinant protein encompassing a sequence within the center region of human SETDB1. The exact sequence is proprietary.
Purification	Purified by antigen-affinity chromatography.
Conjugation	Unconjugated

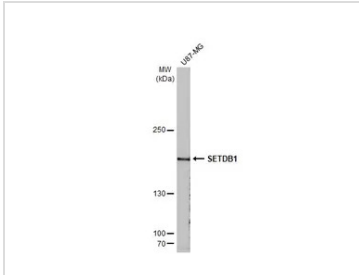


For full product information, images and publications, please visit our [website](#).

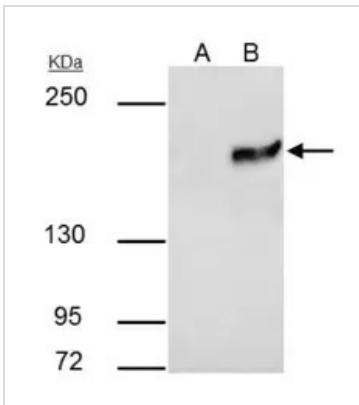
For laboratory research use only. Not for any clinical, therapeutic, or diagnostic use in humans or animals. Not for animal or human consumption.

**Note**

Purchasers shall not, and agree not to enable third parties to, analyze, copy, reverse engineer or otherwise attempt to determine the structure or sequence of the product.

**DATA IMAGES**

**GTXT115305 WB Image**

Whole cell extract (30 µg) was separated by 5% SDS-PAGE, and the membrane was blotted with SETDB1 antibody [N1], N-term (GTXT115305) diluted at 1:2000. The HRP-conjugated anti-rabbit IgG antibody (GTXT213110-01) was used to detect the primary antibody.


**GTXT115305 IP Image**

SETDB1 antibody [N1], N-term immunoprecipitates SETDB1 protein in IP experiments.

IP samples: HeLa nuclear extract

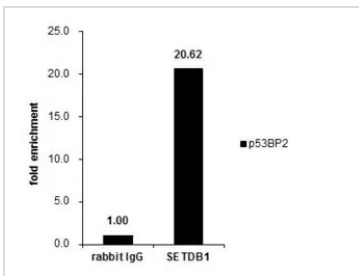
A. Control with 4 µg of preimmune Rabbit IgG

B. Immunoprecipitation of SETDB1 protein by 4 µg SETDB1 antibody [N1], N-term (GTXT115305)

5 % SDS-PAGE

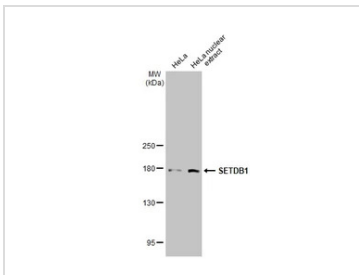
The immunoprecipitated SETDB1 protein was detected by SETDB1 antibody [N1], N-term (GTXT115305) diluted at 1:1000.

[EasyBlot anti-rabbit IgG (GTXT221666-01) was used as a secondary reagent]


**GTXT115305 ChIP assay Image**

Cross-linked ChIP was performed with HeLa chromatin extract and 5 µg of either control rabbit IgG or anti-SETDB1 antibody. The precipitated DNA was detected by PCR with primer set targeting to P53BP2.

ChIP experiment and primer designs are based on [J Biol Chem. 2006 Jul 14;281\(28\):19489-500.](#)


**GTXT115305 WB Image**

HeLa whole cell and nuclear extract (30 µg) were separated by 5% SDS-PAGE, and the membrane was blotted with SETDB1 antibody [N1], N-term (GTXT115305) diluted at 1:1000. The HRP-conjugated anti-rabbit IgG antibody (GTXT213110-01) was used to detect the primary antibody.



For full product information, images and publications, please visit our [website](#).