

ACTR1B antibody

Cat. No. GTX115347

| | |
|--------------|-------------------|
| Host | Rabbit |
| Clonality | Polyclonal |
| Isotype | IgG |
| Applications | WB, ICC/IF, IHC-P |
| Reactivity | Human, Mouse |

Package
100 µl, 25 µl

Applications

Application Note

*Optimal dilutions/concentrations should be determined by the researcher.

| Suggested dilution | Recommended dilution |
|--------------------|----------------------|
| WB | 1:500-1:3000 |
| ICC/IF | 1:100-1:1000 |
| IHC-P | 1:100-1:1000 |

Not tested in other applications.

Calculated MW 42 kDa. ([Note](#))

Properties

| | |
|---------------|--|
| Form | Liquid |
| Buffer | 0.1M Tris, 0.1M Glycine, 20% Glycerol |
| Preservative | 0.01% Thimerosal |
| Storage | Store as concentrated solution. Centrifuge briefly prior to opening vial. For short-term storage (1-2 weeks), store at 4°C. For long-term storage, aliquot and store at -20°C or below. Avoid multiple freeze-thaw cycles. |
| Concentration | 0.69 mg/ml (Please refer to the vial label for the specific concentration.) |
| Immunogen | Recombinant protein encompassing a sequence within the center region of human ACTR1B. The exact sequence is proprietary. |
| Purification | Purified by antigen-affinity chromatography. |
| Conjugation | Unconjugated |

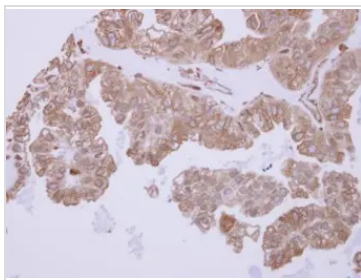
Note

For laboratory research use only. Not for any clinical, therapeutic, or diagnostic use in humans or animals. Not for animal or human consumption.

Purchasers shall not, and agree not to enable third parties to, analyze, copy, reverse engineer or otherwise attempt to determine the structure or sequence of the product.



For full product information, images and publications, please visit our [website](#).

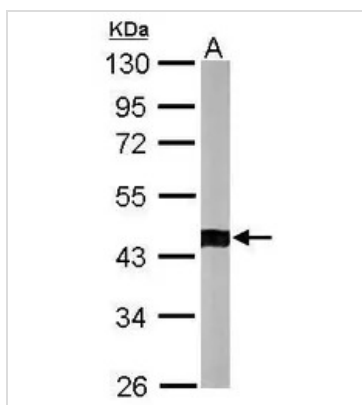
DATA IMAGES

GTX115347 IHC-P Image

ACTR1B antibody detects ACTR1B protein at cytosol on human ovarian carcinoma by immunohistochemical analysis.

Sample: Paraffin-embedded ovarian carcinoma.

ACTR1B antibody (GTX115347) dilution: 1:500.

Antigen Retrieval: Trilogy™ (EDTA based, pH 8.0) buffer, 15min

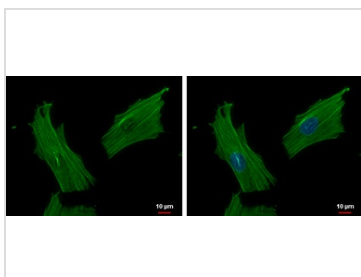

GTX115347 WB Image

Sample (50 ug of whole cell lysate)

A: mouse brain

10% SDS PAGE

GTX115347 diluted at 1:1000

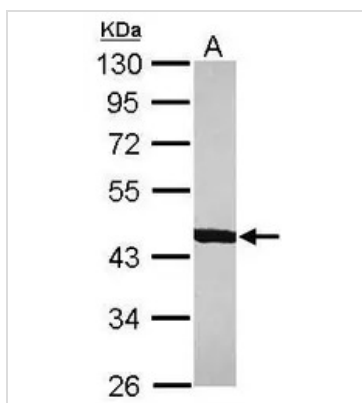

GTX115347 ICC/IF Image

ACTR1B antibody detects ACTR1B protein at cytoskeleton by immunofluorescent analysis.

Sample: SKNSH cells were fixed in ice-cold MeOH for 5 min.

Green: ACTR1B protein stained by ACTR1B antibody (GTX115347) diluted at 1:1000.

Blue: Hoechst 33342 staining.


GTX115347 WB Image

Sample (30 ug of whole cell lysate)

A: IMR32

10% SDS PAGE

GTX115347 diluted at 1:1000



For full product information, images and publications, please visit our [website](https://www.genetex.com).