

SFRS14 antibody

Cat. No. GTX115357

Host	Rabbit
Clonality	Polyclonal
Isotype	IgG
Applications	WB, IP
Reactivity	Human

Package
100 µl, 25 µl

Applications

Application Note

*Optimal dilutions/concentrations should be determined by the researcher.

Suggested dilution	Recommended dilution
WB	1:500-1:3000
IP	1:100-1:500

Not tested in other applications.

Calculated MW 120 kDa. ([Note](#))

Properties

Form	Liquid
Buffer	PBS, 20% Glycerol
Preservative	0.01% Thimerosal
Storage	Store as concentrated solution. Centrifuge briefly prior to opening vial. For short-term storage (1-2 weeks), store at 4°C. For long-term storage, aliquot and store at -20°C or below. Avoid multiple freeze-thaw cycles.
Concentration	1 mg/ml (Please refer to the vial label for the specific concentration.)
Immunogen	Recombinant protein encompassing a sequence within the N-terminus region of human SFRS14. The exact sequence is proprietary.
Purification	Purified by antigen-affinity chromatography.
Conjugation	Unconjugated

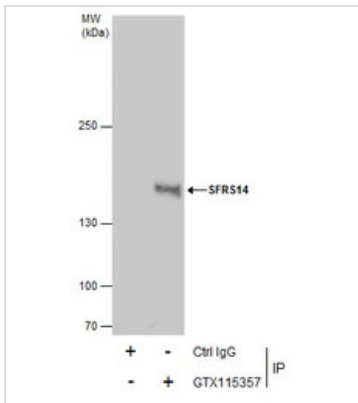
Note

For laboratory research use only. Not for any clinical, therapeutic, or diagnostic use in humans or animals. Not for animal or human consumption.

Purchasers shall not, and agree not to enable third parties to, analyze, copy, reverse engineer or otherwise attempt to determine the structure or sequence of the product.



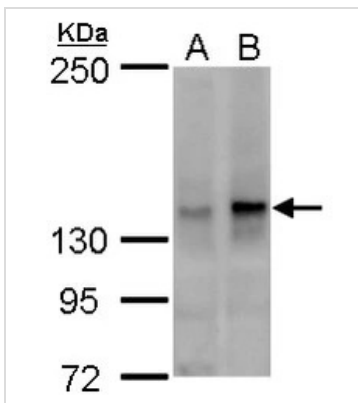
For full product information, images and publications, please visit our [website](#).

DATA IMAGES

GTX115357 IP Image

Immunoprecipitation of SFRS14 protein from HeLa whole cell extracts using 5 µg of SFRS14 antibody (GTX115357).

Western blot analysis was performed using SFRS14 antibody (GTX115357).

EasyBlot anti-Rabbit IgG (GTX221666-01) was used as a secondary reagent.


GTX115357 WB Image

SFRS14 antibody detects SFRS14 protein by western blot analysis.

A. 30 µg HeLa whole cell lysate/extract

B. 30 µg HeLa nuclear lysate/extract

5 % SDS-PAGE

SFRS14 antibody (GTX115357) dilution: 1:500



For full product information, images and publications, please visit our [website](https://www.genetex.com).